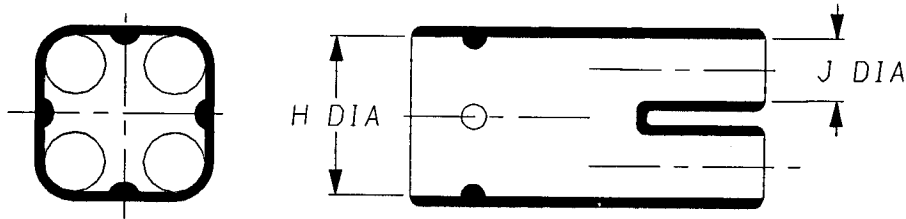
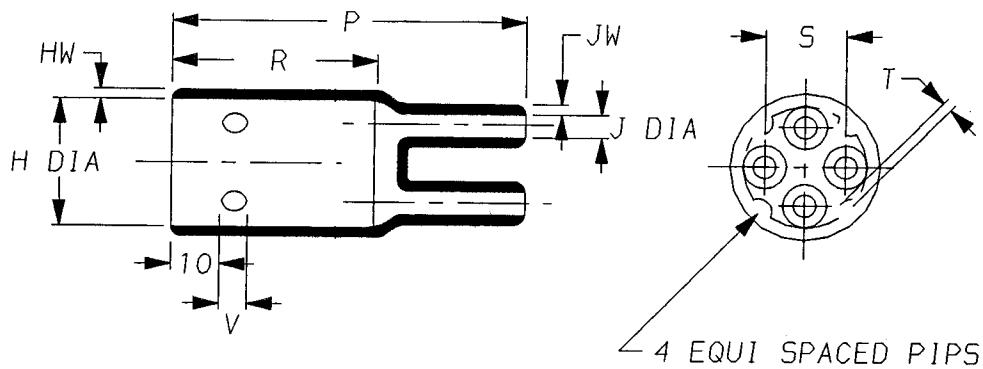


a) Part as supplied

502W2\*\*



b) Part after unrestricted recovery



DIMENSIONS (in millimetres).

Part Number	Size	H		J		P	R	S	T	V	HW	JW
		Min	Max	Min	Max	±10%	±10%	±10%	±10%	±10%	±20%	±20%
		a	b	a	b	b	b	b	b	b	b	b
502W233	(B)	29	22	12.6	3.0	65	42	13	2.0	5.0	2.0	2.0
502W244	(C)	35	27	15	6.0	70	42	16	2.0	5.0	2.0	2.0

Copyright (!)

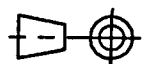
The copyright in this drawing is the property of Tyco Electronics UK Ltd. The drawing is issued on the condition that it is not copied, reproduced or disclosed to a third party, either in whole or in part without the prior written consent of Tyco Electronics UK Ltd.

Drawn A.LILLEY. Checked *[Signature]* Issue 8 Date February 2001 Conforms to ISO Recommendations

Approval  
Design *[Signature]*

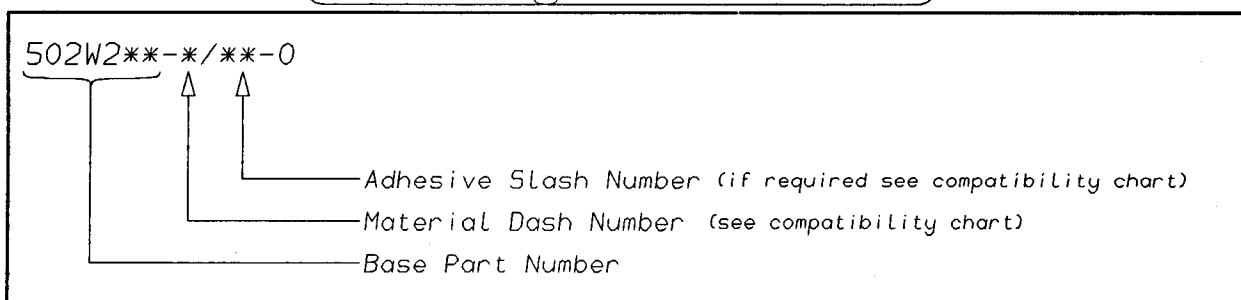
MKTG. *[Signature]* Q.A. *[Signature]*

3rd Angle Projection  
Not to Scale



Iss.	Date	E.C.R. No.	Details of Change
2	****	****	502W244 J max was 6
3	****	****	502W244 S was 18.5
4	****	****	J min was 7
5	****	****	502W244 J min was 12
6	****	****	233 H min was 29, J min was 8, 244 H min was 35, J min was 11
7	****	4857 & 4858	233 Ha was 25.7, 244 Ha was 31
8	****	****	Redrawn

### (Ordering Information)



### (COMPATIBILITY CHART)

MATERIAL DASH NUMBER	MATERIAL DESCRIPTION	COATING SLASH NUMBER
-3	POLYOLEFIN, SEMI-RIGID	/42, /86
-4	POLYOLEFIN, FLEXIBLE	/42, /86
-25	ELASTOMER, FLUID RESISTANT	/86, /225
-130	POLYOLEFIN, COMMERCIAL FLEXIBLE	/42

AS SUPPLIED DIMENSIONS ARE FOR UNCOATED PARTS,  
WHEN COATING IS ADDED, ENTRY DIAMETERS WILL REDUCE BY 1.5mm MAX.

Raychem Wire & Harness  
a Division of Tyco Electronics  
Faraday Road,  
Swindon, Wiltshire, England. SN3 5JA  
Telephone: (01793) 528171 Fax: 572516

Raychem Wire & Harness  
a Division of Tyco Electronics  
300, Constitution Drive, Menlo Park,  
California 94025-1164, USA  
Telephone (650) 361-3333 Fax: (650) 361-5579