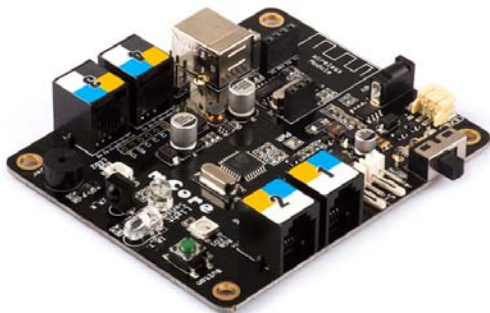




## mCore - Main Control Board for mBot

SKU: 10041 Weight: 47.00 Gram

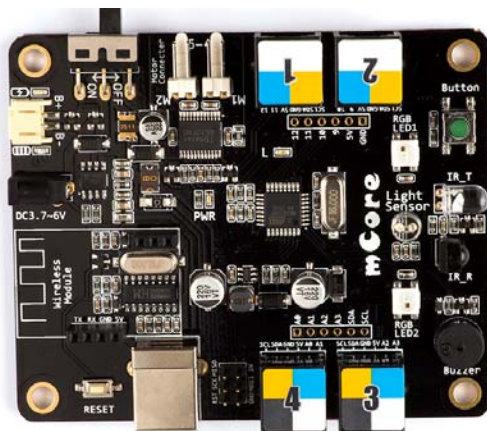
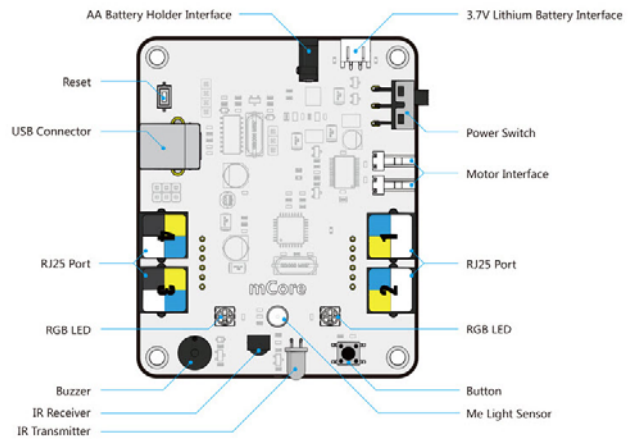


### What is mCore?

mCore is an easy-to-use main control board specially designed for mBot. Based on Arduino Uno, mCore integrates various onboard sensors, such as buzzer, light sensor, RGB LED, etc., which provides you an easier way to start learning electronics.

## Features

- Comes with Arduino and Makeblock Library for easy programming.
- Include various featured sensors, such as buzzer, light sensor, RGB LED, etc.
- On-board USB type B connector design for long-time use.
- Resettable fuse prevents the board from getting burn.
- Four color-labelled RJ25 connectors for easy wiring and expansion with more Arduino sensors.

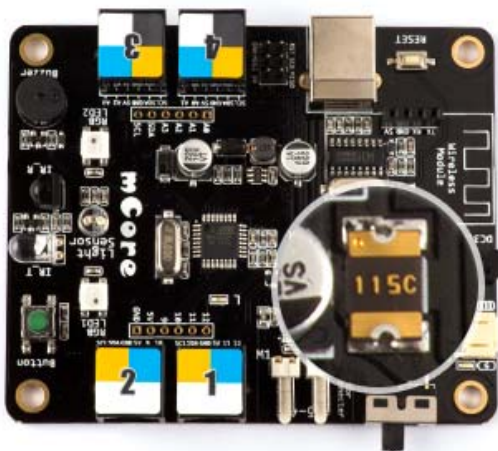
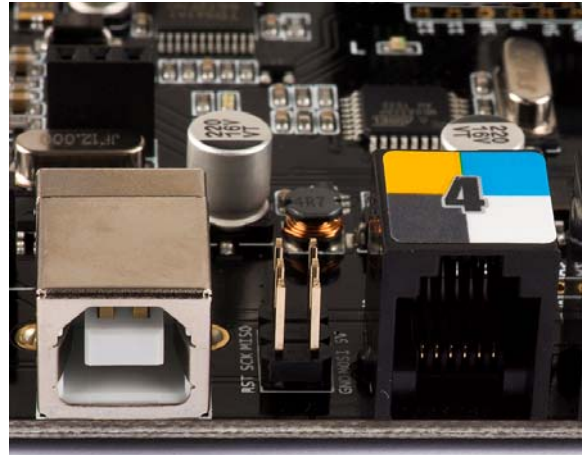


## One Board, Various Sensors

mCore comes with various sensors for different applications, such as buzzer, light sensor, RGB LED, etc. It enables you to learn multiple basic electronic knowledge with this one board.

## Durable USB Type B Connector

Instead of using normal Micro USB connector, on-board USB type B connector design can hold the wire firmly and ensure long-time use.

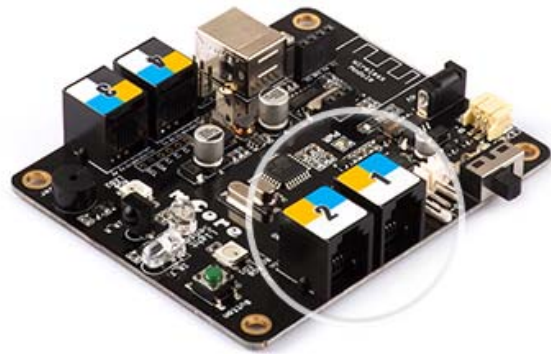


## Resettable Fuse

The on-board resettable fuse can help protect the board against over-current faults. When over-current occurs, the resettable fuse will simply reset the operation of the board into normal status.

## Easy Wiring

The RJ25 connectors in mCore is color-labelled, ensuring mCore can be wired in a really quick way. All the wiring is simple and very clean, thus more time can be spent on creating projects.

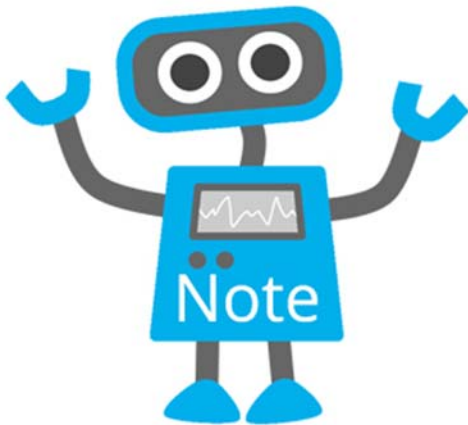
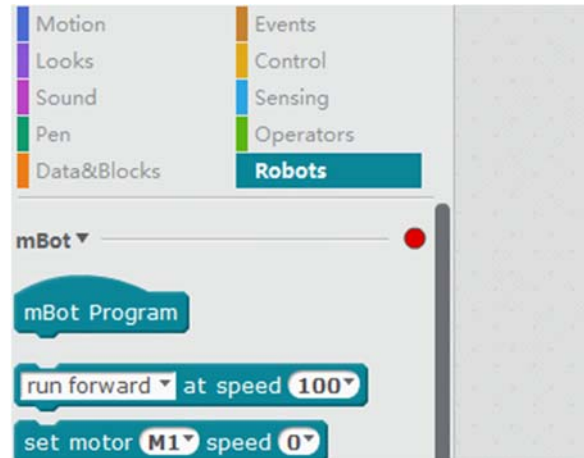


## More Arduino

In addition to connecting to other electronic modules from Makeblock, the four RJ25 interfaces also support connecting to more Arduino sensors, hence you can explore more in electronics' world.

## Work with mBlock

mCore for mBot is fully compatible with mBlock which is a graphical programming environment based on Scratch 2.0 Open Source Code. It makes programming projects and interactive applications easier through simply dragging and dropping function blocks.



### Note:

The Bluetooth module is not included in mCore, you may need to buy it on your own, visit below website to buy: [Bluetooth Module for mBot](#).

Specifications	
Operating Voltage	3.7-6V DC power
Microcontroller	ATmega328
Product Dimension	90 x 79 x 18mm (3.54 x 3.11 x 0.71inch)
Package Dimension	110 x 150 x 10 mm (4.33 x 5.91 x 0.39inch)
Net Weight	43g (1.52oz)
Gross Weight	47g (1.66oz)
Package Content	1 x mCore