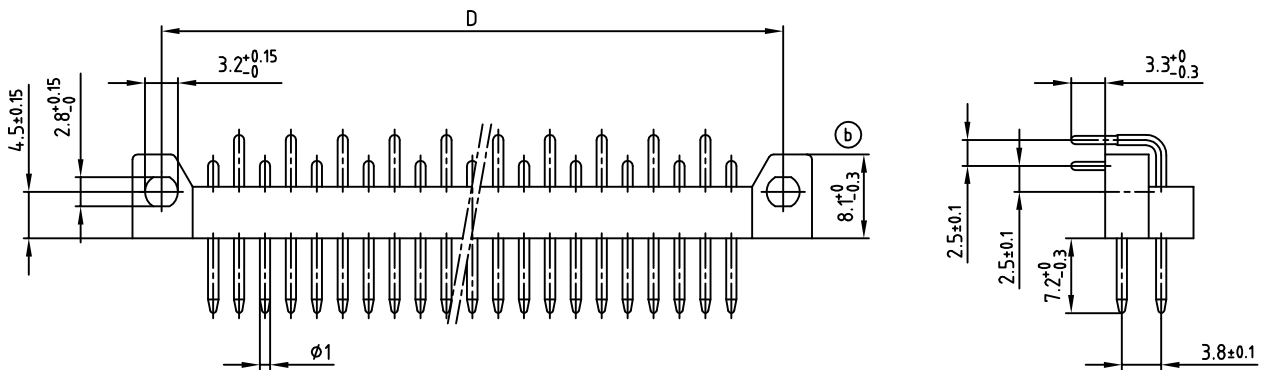
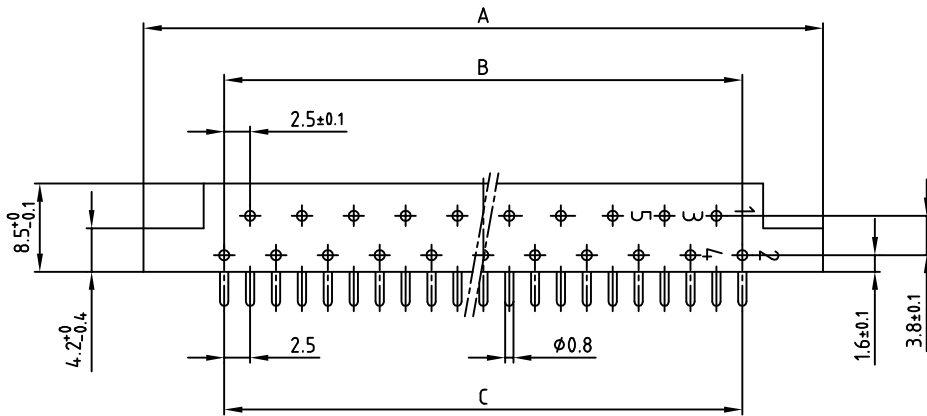


used for: DIN 41617

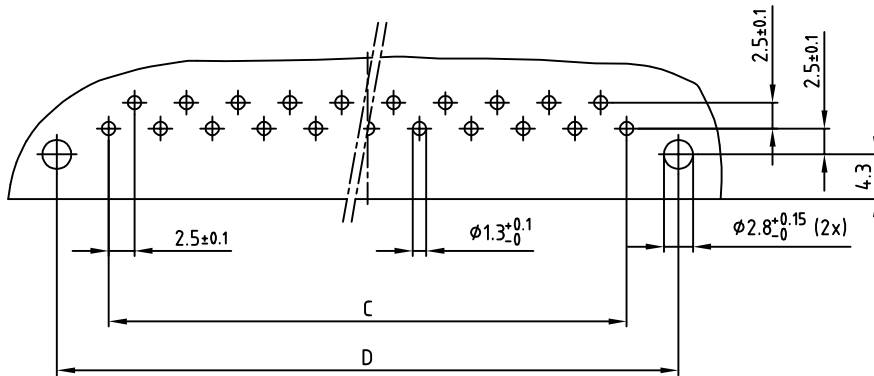


Polzahl No. of pos.	A ±0.2	B ±0.1	C ±0.1	D ±0.1	Art.-Nr. Part-No
13	45.6	12x2.5=30	12x2.5=30	40	101B10079X
21	65.6	20x2.5=50	20x2.5=50	60	101B10099X
31	90.6	30x2.5=75	30x2.5=75	85	101B10119X

NOTES:

1. INSULATOR: PC GF UL 94 V-1, GREY
2. CONTACTS: COPPER ALLOY
PLATING: GOLD OVER NICKEL
400 MATING CYCLES
3. CONNECTOR IS PART MARKED: PART-NO CONEC ABC

P.C.B. HOLE DRILLINGS



Directive 2002/95/EC RoHS compliant

APPROVAL # FREIGABE # DEBLOCAGE # AUTORIZACION # APPROVAL	
CUSTOMER APPROVAL DATE:	
NAME:	TITLE:
COMPANY NAME:	
APPROVAL # FREIGABE # DEBLOCAGE # AUTORIZACION # APPROVAL	

THIS DRAWING MAY NOT BE COPIED OR REPRODUCED IN ANY WAY, AND MAY NOT BE PASSED ON TO A THIRD PARTY, WITHOUT WRITTEN PERMISSION.
OWNERSHIP AND COPYRIGHT OF CONEC GmbH
DO NOT ALTER CAD DRAWING BY HAND

rev.	description	date	name
1 x b	Ä6688	15.03.2013	E.Mick.
a	Origin		

tolerance		
dim.	in	mm
2006	date	name
drawn	21.08.	Sonnenberg
appd.	21.08.	Mickenbecker
norm	DIN 41617	
d-old		

scale:	2:1	
material:	SEE NOTES	
title:	MALE CONNECTOR 13pos.-31pos. / 2.5mm with angled solder pins	
dwg no:	AutoCAD 2006	DIN-A
	10K2A014	3
part no:	SEE TABLE	sh: 1/1