

APPLICATOR STYLE CONVERSION CHART. Table with columns: PART NUMBER, REVISION, DESCRIPTION, FEED TYPE, CONVERT TO, PART NUMBERS REQUIRED.

APPLICATOR DATA. Table with columns: CRIMP SIZE, WIRE, INSUL, TYPE. Includes applicator instructions 408-10390.

Terminal Data and Application Specification. Includes tables for Terminal Name, Wire Strip Length, Insulation Diameter Range, Terminal Application Specification, and Terminals Applied.

WIRE SIZE vs CRIMP HEIGHT REFERENCE SETTING. Table showing wire size (mm) and crimp height settings.

- RECOMMENDED SPARE PARTS
GREASE BEARING SURFACES LIGHTLY
LUBRICATE DAILY PER THE APPLICATOR INSTRUCTION SHEET
APPLICATOR SPECIFIC DATA TO BE ENTERED INTO BLANK MEMORY CHIP AT ASSEMBLY
ADJUSTMENT OF THE STRIPPER MAY BE REQUIRED
APPLY PART NUMBER 1-23419-5
GREASE THREADS, GROOVE AND O-RING
MAGNET, ITEM 166 MUST BE ORIENTED CORRECTLY
CRIMP HEIGHT REFERENCE SETTING WAS THE SETTING USED
SPARE FEED CAM STORAGE LOCATION REFER TO INSTRUCTION SHEET
THE RECOMMENDED SET-UP FOR END FEED APPLICATORS IS POST-FEED WITH ITEM 2119653-1
WHEN ASSEMBLING -6 NON-CRIMP HEIGHT ADJUST APPLICATOR

\*WARNING
ON INSTALLATION, SET WIRE DISC, ITEM 40 TO LARGEST WIRE SIZE SETTING. USE OF SETTINGS BELOW MINIMUM REQUIRED CRIMP HEIGHT SETTING WILL CAUSE DAMAGE TO CRIMP TOOLING.

Table with columns: PART NO, DESCRIPTION, ITEM NO. Lists parts like APPLICATOR SHIM PACK, O-RING, PUSH ROD, etc.

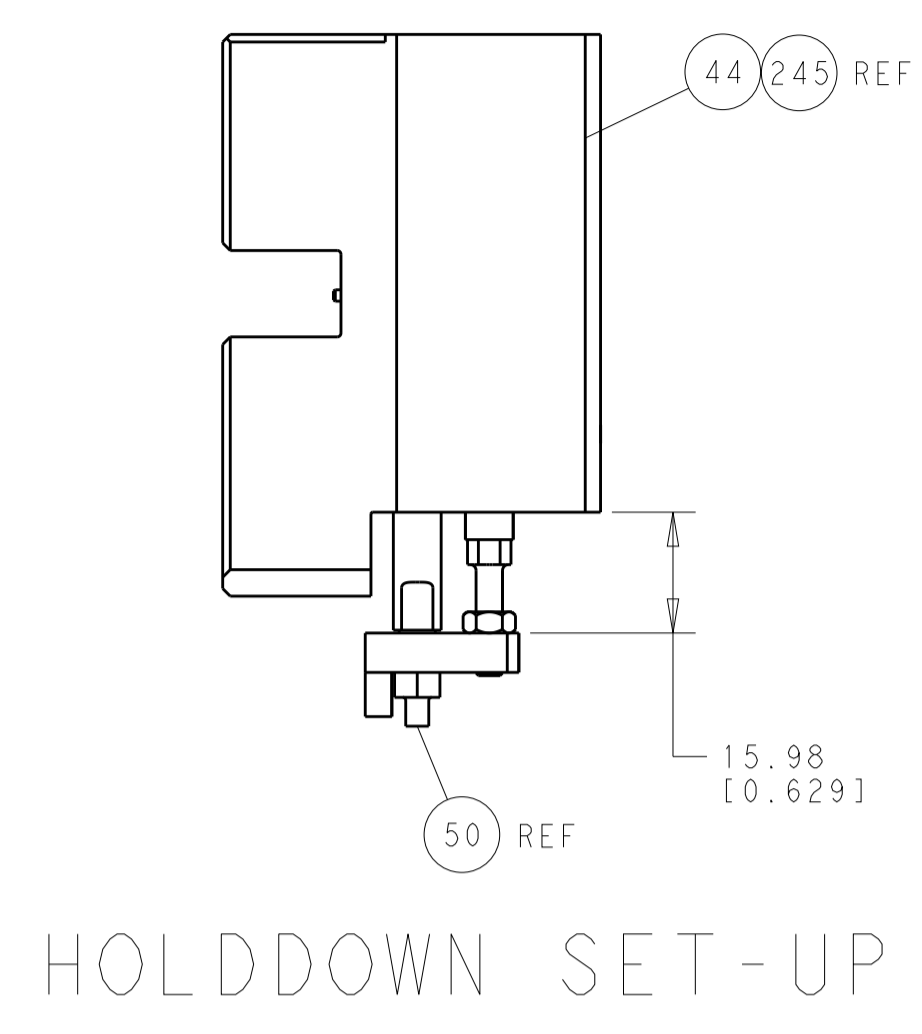
ATLANTIC VERSION
Shown on sheets 1 of 4 & 2 of 4
(Pacific version shown on sheets 3 of 4 & 4 of 4)

REVISIONS table with columns: REVISION, DATE, OWN, APPR. Shows revisions A and 1.

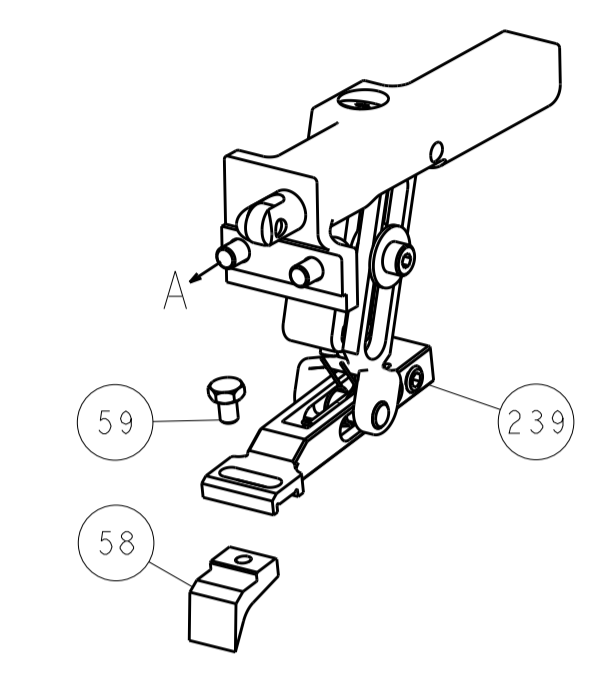
Main parts list table with columns: PART NUMBER, DESCRIPTION, DATE, QTY, UNIT. Lists various components like WASHER, RETAINER, SHCS, SPRING, etc.

Product information block including dimensions, tolerances, materials, and customer accessible production drawing information.

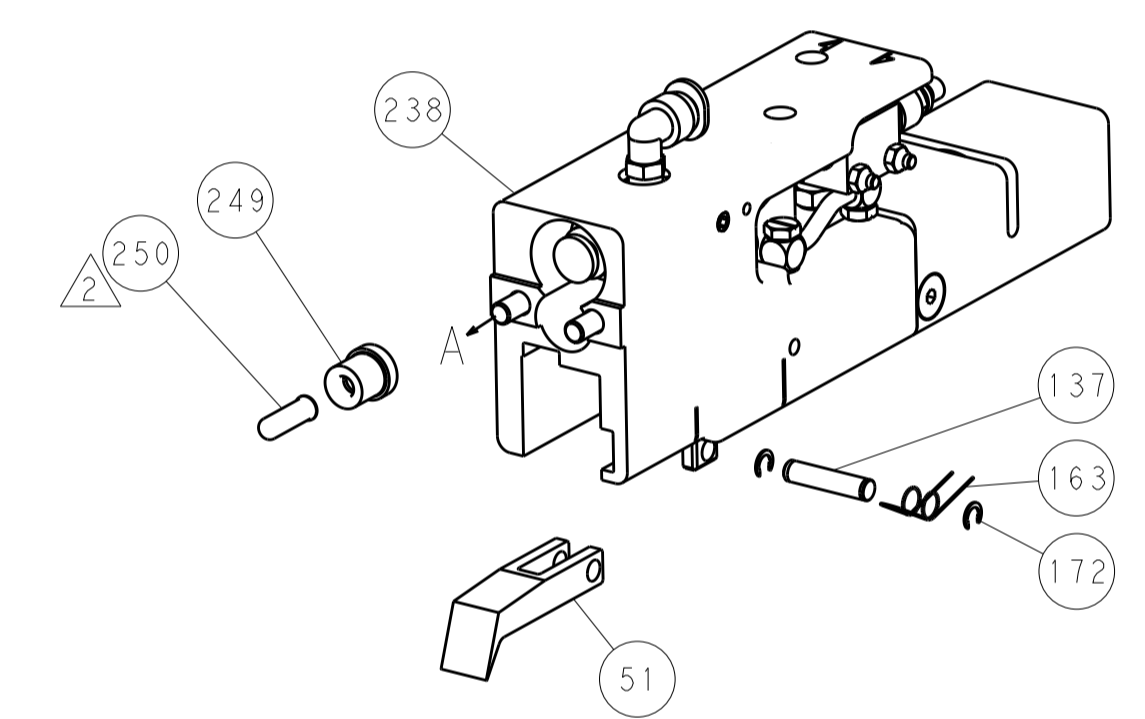
LOC	DIST	REV	DATE	BY	APPV
A	66				
REVISIONS			DESCRIPTION	DATE	BY
-			SEE SHEET 1	-	-



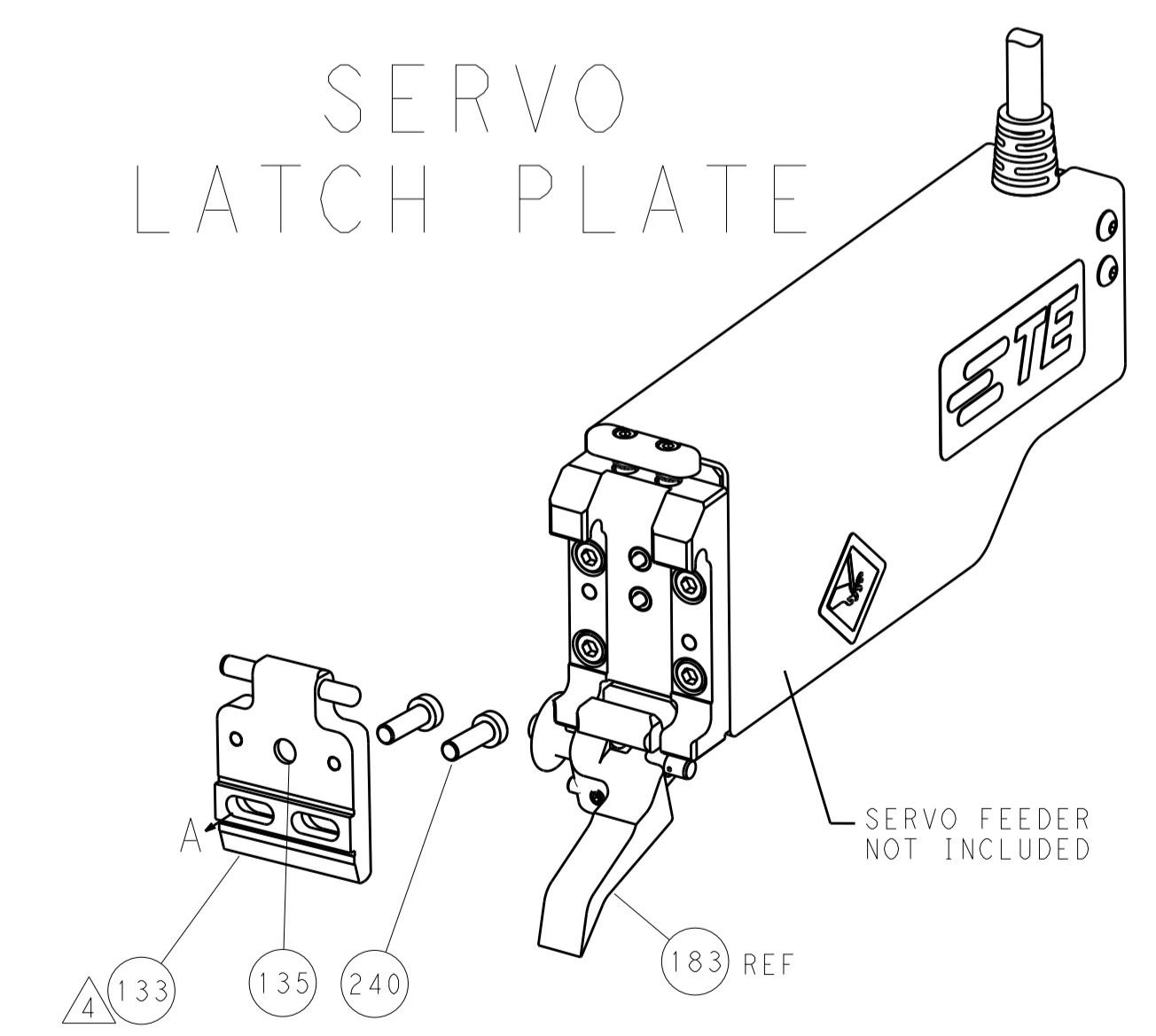
FEED TYPE  
MECHANICAL



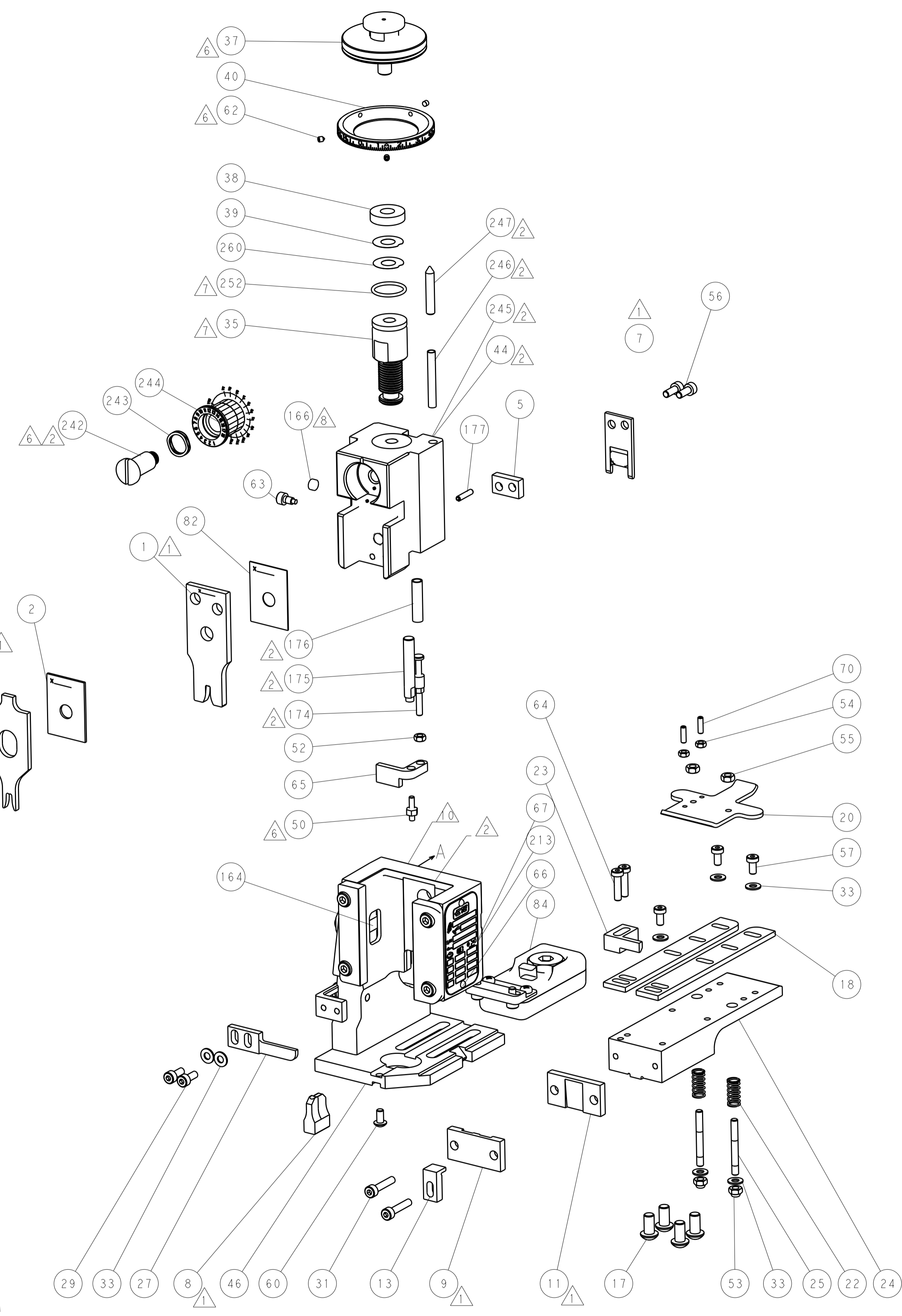
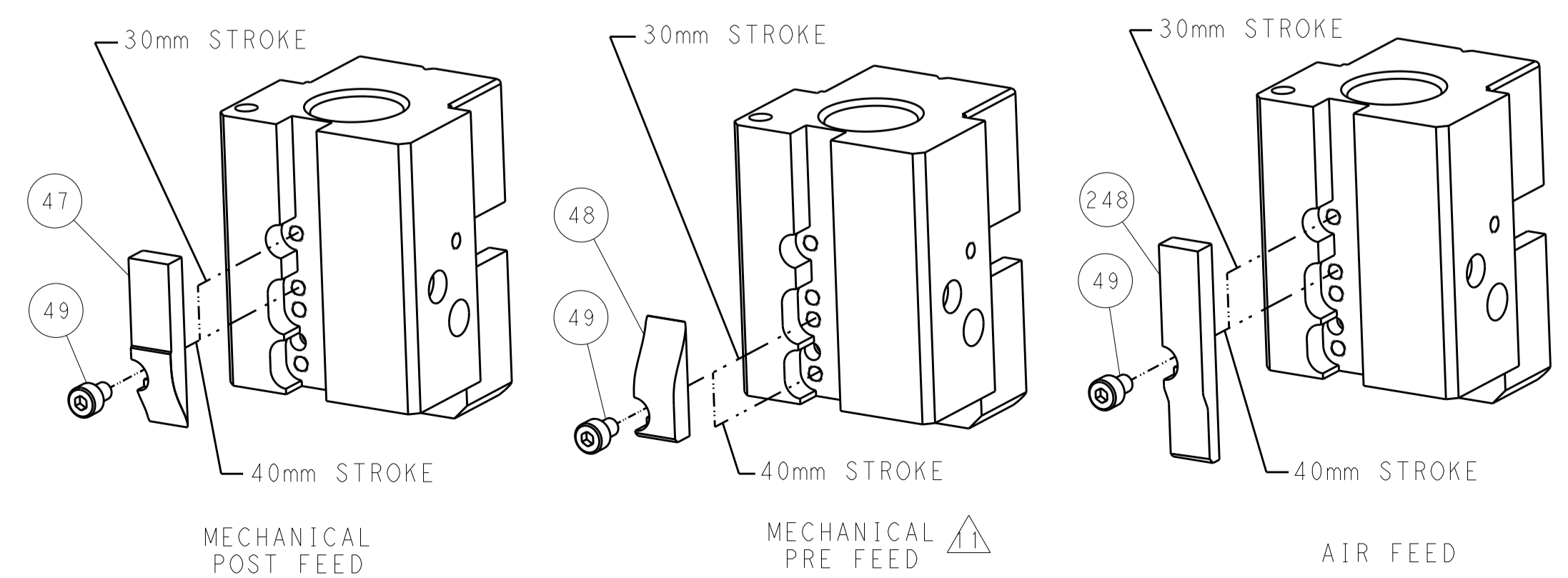
PNEUMATIC



SERVO  
LATCH PLATE



CAM POSITIONS

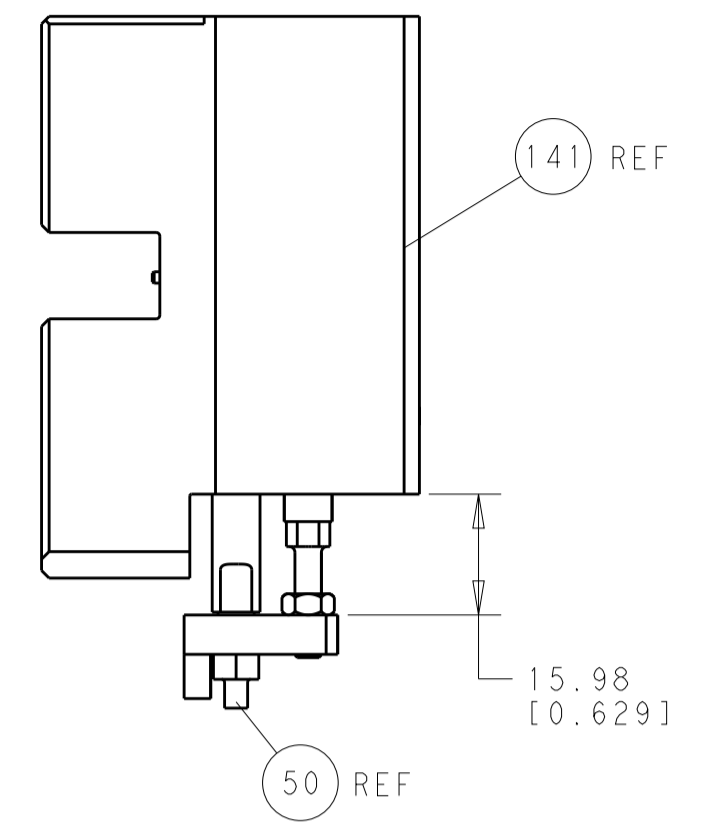


ATLANTIC VERSION  
 Shown on sheets 1 of 4 & 2 of 4  
 (Pacific version shown on sheets 3 of 4 & 4 of 4)

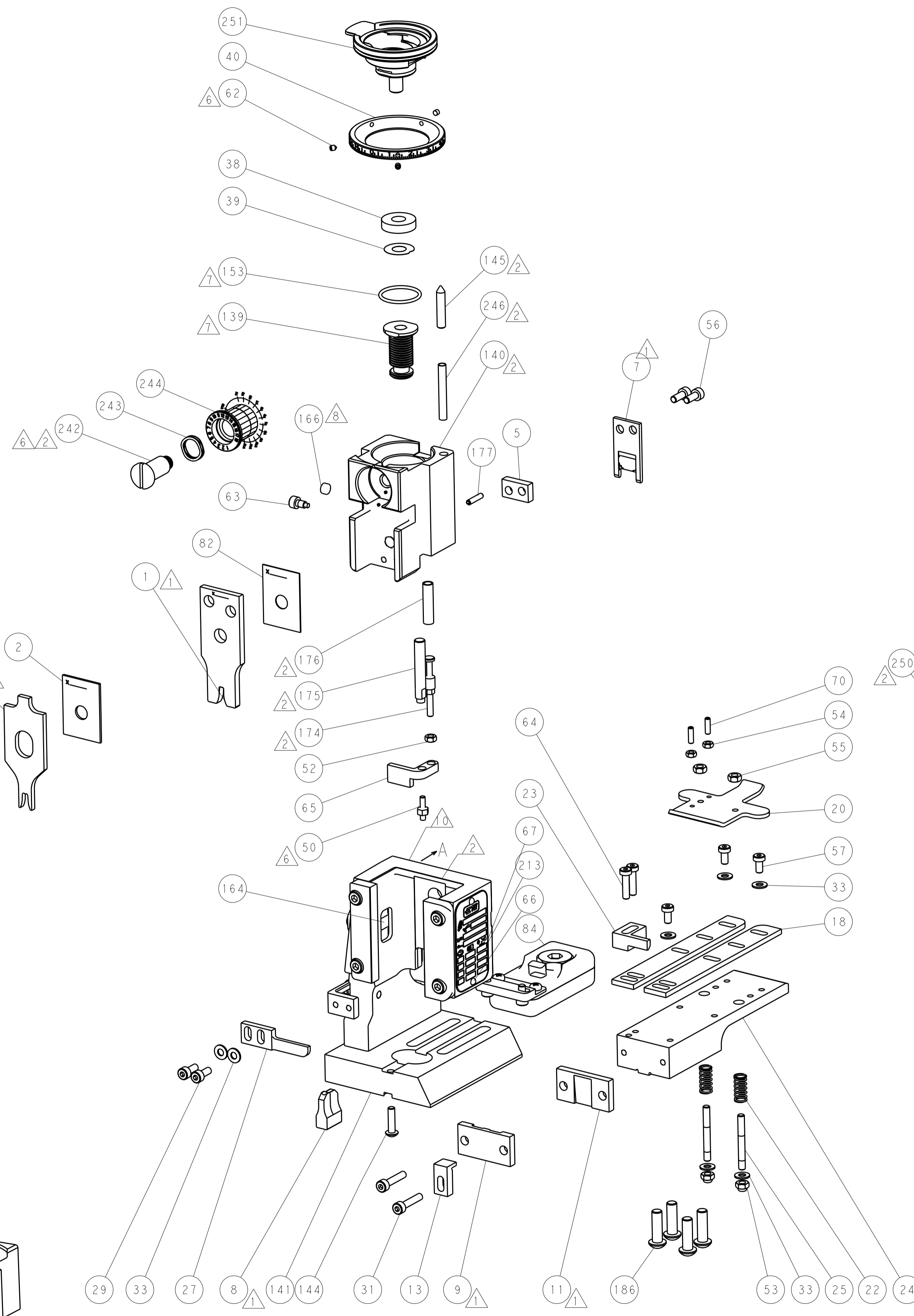
DIMENSIONS:		TOLERANCES UNLESS OTHERWISE SPECIFIED:		DWG: Y. YIN 12FEB2014		TE Connectivity	
mm		0 PLC ±0.5		CHK: G. BAILEY 12FEB2014		Harrisburg, PA 17105-3608	
Ø		1 PLC ±0.13		APPV: H. GUO 12FEB2014		NAME: Ocean End Feed Applicator	
HOLE		3 PLC ±0.013		PRODUCT SPEC		SIZE: CAGE CODE: DRAWING NO: RESTRICTED TO	
MATERIAL:		4 PLC ±0.001		APPLICATION SPEC		A11 00779 ©=2150409	
FINISH:		ANGLES ±0.001		WEIGHT		Customer Accessible Production Drawing	
				SCALE: 1:1		SHEET 2 OF 4 REV A	



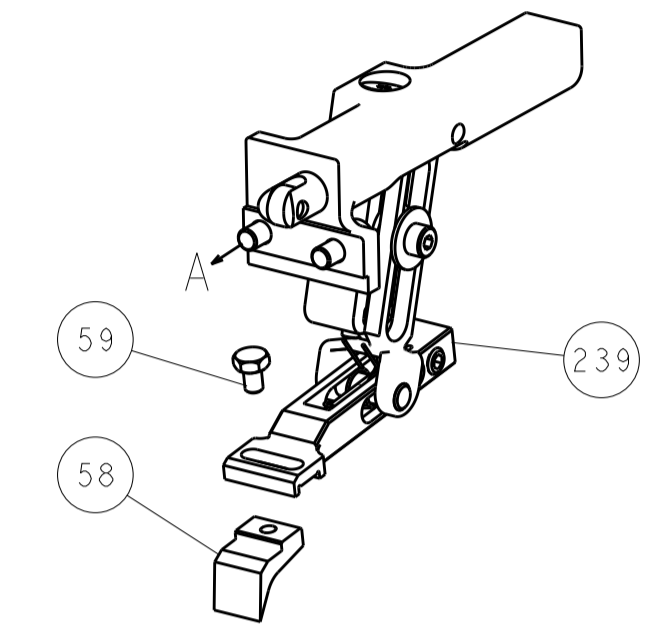
LOC		DIST		REVISIONS			
A	66	P	LTM	DESCRIPTION	DATE	OWN	APVD
		-	-	SEE SHEET 1	-	-	-



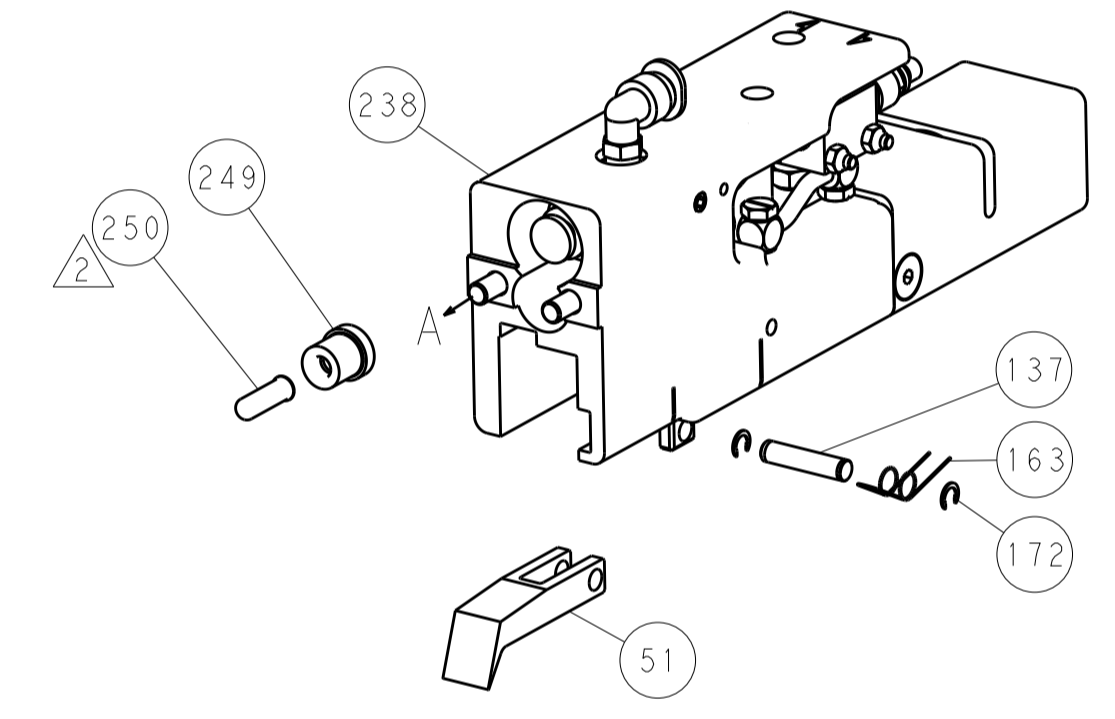
HOLDDOWN SET-UP



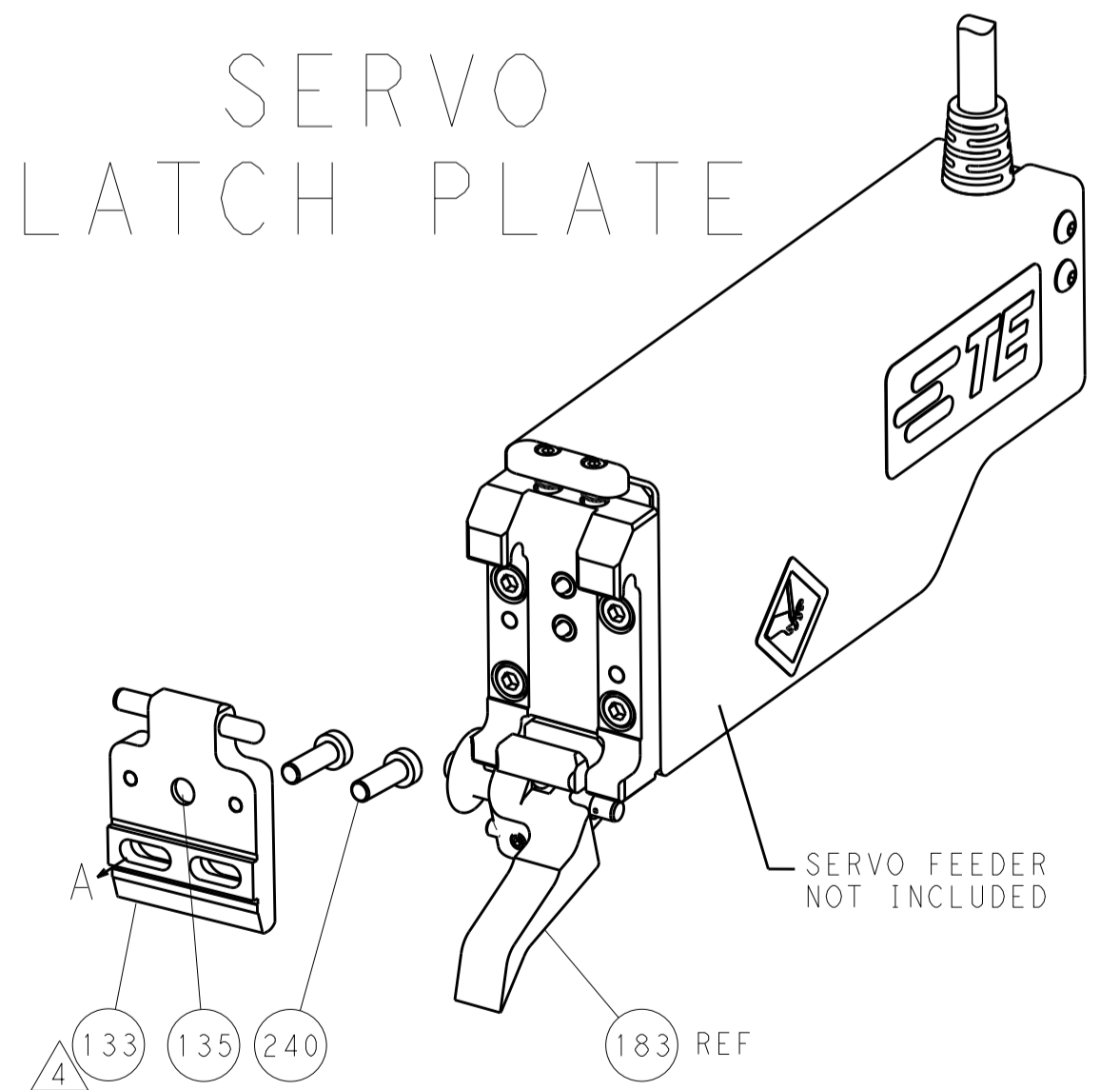
FEED TYPE  
MECHANICAL



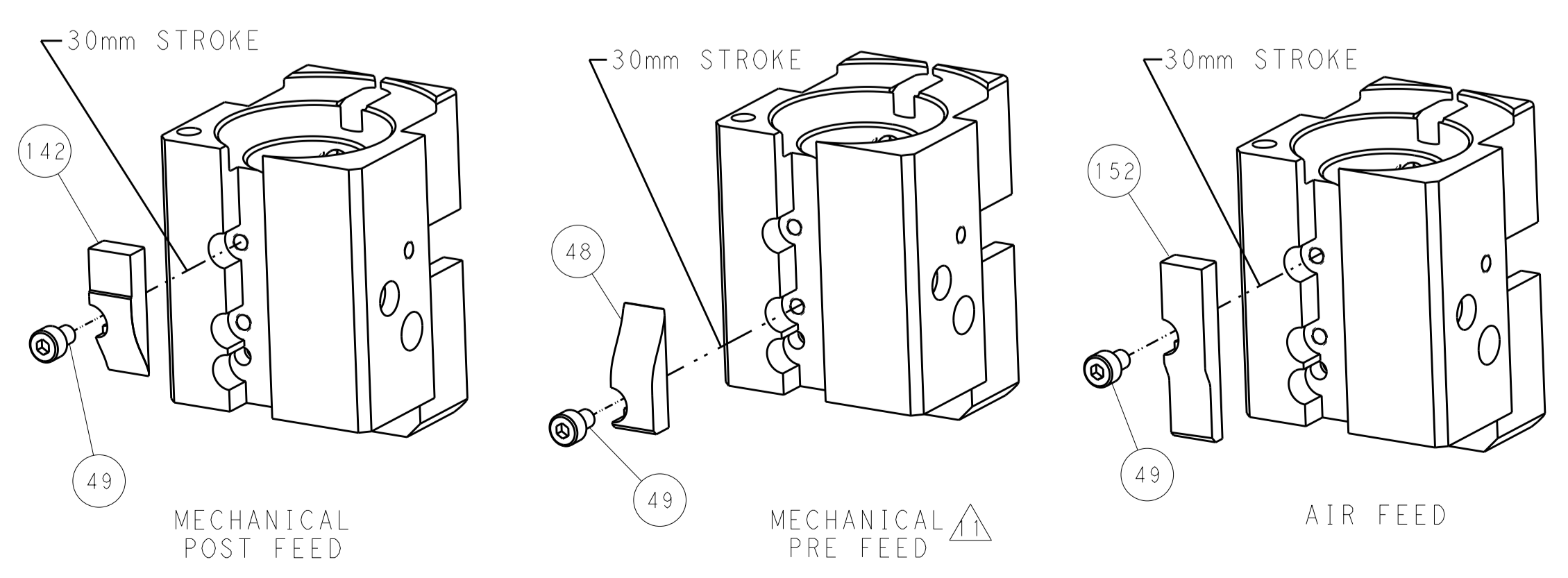
PNEUMATIC



SERVO LATCH PLATE



CAM POSITIONS



PACIFIC VERSION  
 Shown on sheets 3 of 4 & 4 of 4  
 (Atlantic version shown on sheets 1 of 4 & 2 of 4)

DIMENSIONS:		TOLERANCES UNLESS OTHERWISE SPECIFIED:		DWN Y. YIN 12FEB2014		STE TE Connectivity Harrisburg, PA 17105-3608	
mm	0 PLC ±0.5	1 PLC ±0.5	2 PLC ±0.13	3 PLC ±0.13	CHK G. BAILEY 12FEB2014	NAME Ocean End Feed Applicator	
	4 PLC ±0.013	5 PLC ±0.013	6 PLC ±0.001	7 PLC ±0.001	APVD JJ. GUO 12FEB2014	SIZE CAGE CODE DRAWING NO. RESTRICTED TO	
MATERIAL	FINISH	WEIGHT	APPLIC. SPEC	APPLIC. SPEC	Customer Accessible Production Drawing	SCALE 1:1	SHEET 4 OF 4 REV A