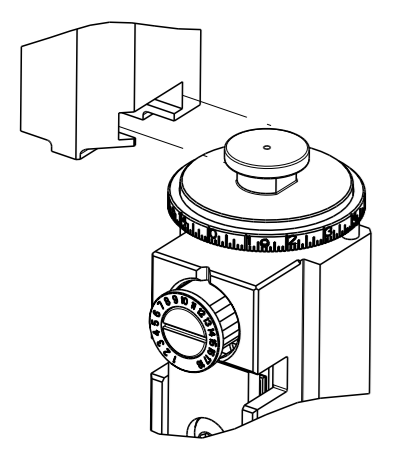


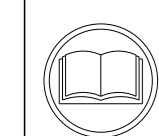
ATLANTIC VERSION TERMINATOR INTERFACE ADAPTER. PART NUMBER, REVISION, DESCRIPTION, FEED TYPE, CONVERT TO, PART NUMBERS REQUIRED.



APPLICATOR DATA. CRIMP SIZE, WIRE, INSUL. APPLICATOR INSTRUCTIONS 408-10389.

TERMINAL DATA: DELPHI PACKARD TERMINAL DELPHI CRIMP SPECIFICATION. WIRE STRIP LENGTH, INSULATION DIAMETER RANGE, TERMINALS APPLIED.

WIRE SIZE, CRIMP HEIGHT mm [INCH], CRIMP HEIGHT REFERENCE SETTING.



- RECOMMENDED SPARE PARTS. GREASE BEARING SURFACES LIGHTLY. LUBRICATE DAILY PER THE APPLICATOR INSTRUCTION SHEET SUPPLIED WITH THE APPLICATOR.

\*WARNING ON INSTALLATION, SET WIRE DISC, ITEM 40 TO LARGEST WIRE SIZE SETTING. USE OF SETTINGS BELOW MINIMUM REQUIRED CRIMP HEIGHT SETTING WILL CAUSE DAMAGE TO CRIMP TOOLING.

Table with 7 columns: Part No, Description, Item No. Row 1: 2119957-2, APPLICATOR SHIM PACK, 260.

ATLANTIC VERSION Shown on sheets 1 of 4 & 2 of 4 (Pacific version shown on sheets 3 of 4 & 4 of 4)

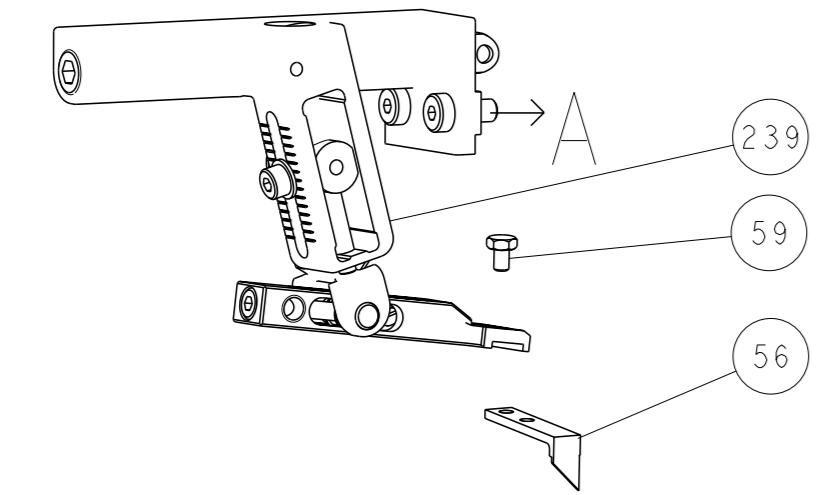
SET UP GAUGE 2119599-1. REVISIONS table with columns: P, LTR, DESCRIPTION, DATE, QTN, APVD.

Main assembly drawing table with columns: P, LTR, DESCRIPTION, DATE, QTN, APVD. Includes parts like O-RING, PUSH ROD, BUSHING, FEED CAM, DETENT PIN, etc.

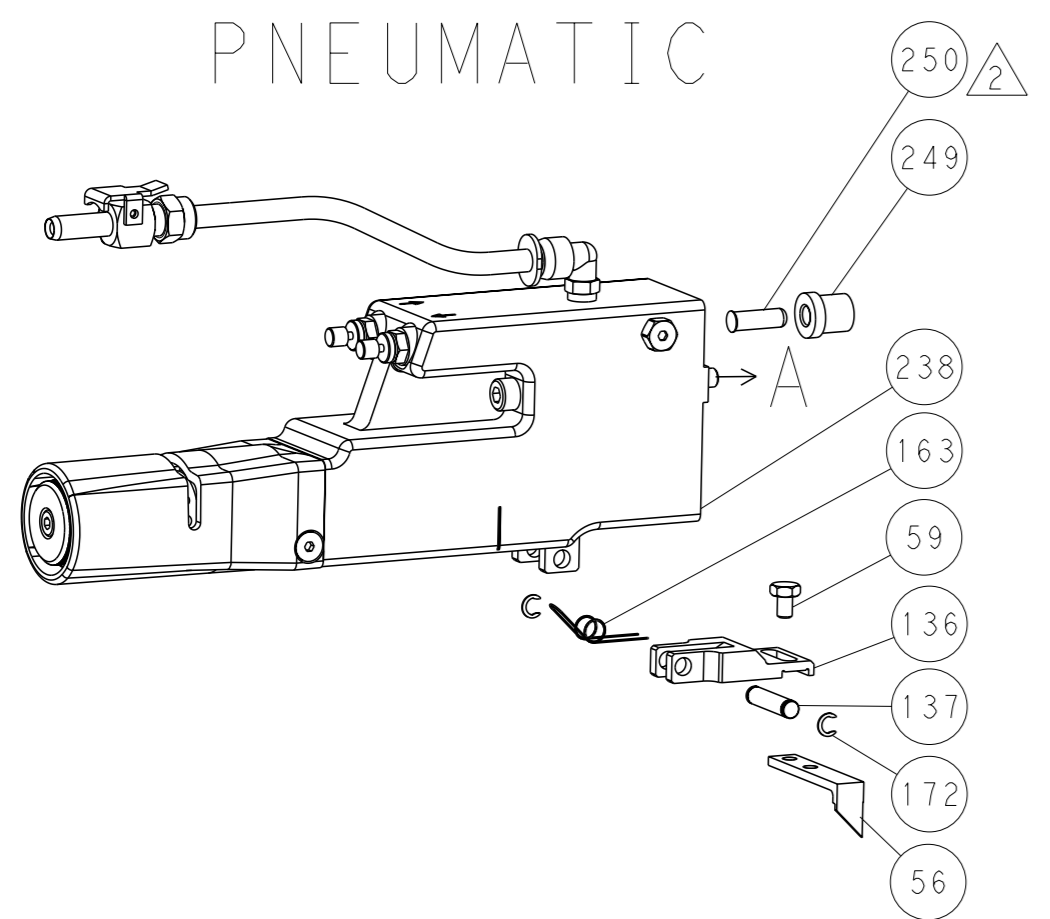
Customer Accessible Production Drawing. DIMENSIONS, TOLERANCES, MATERIAL, WEIGHT, SCALE 1:2, SHEET 1 OF 4, REV A.

LOC		DIST		REVISIONS			
A	66	P	LYR	DESCRIPTION	DATE	OWN	APVD
		-		SEE SHEET 1			

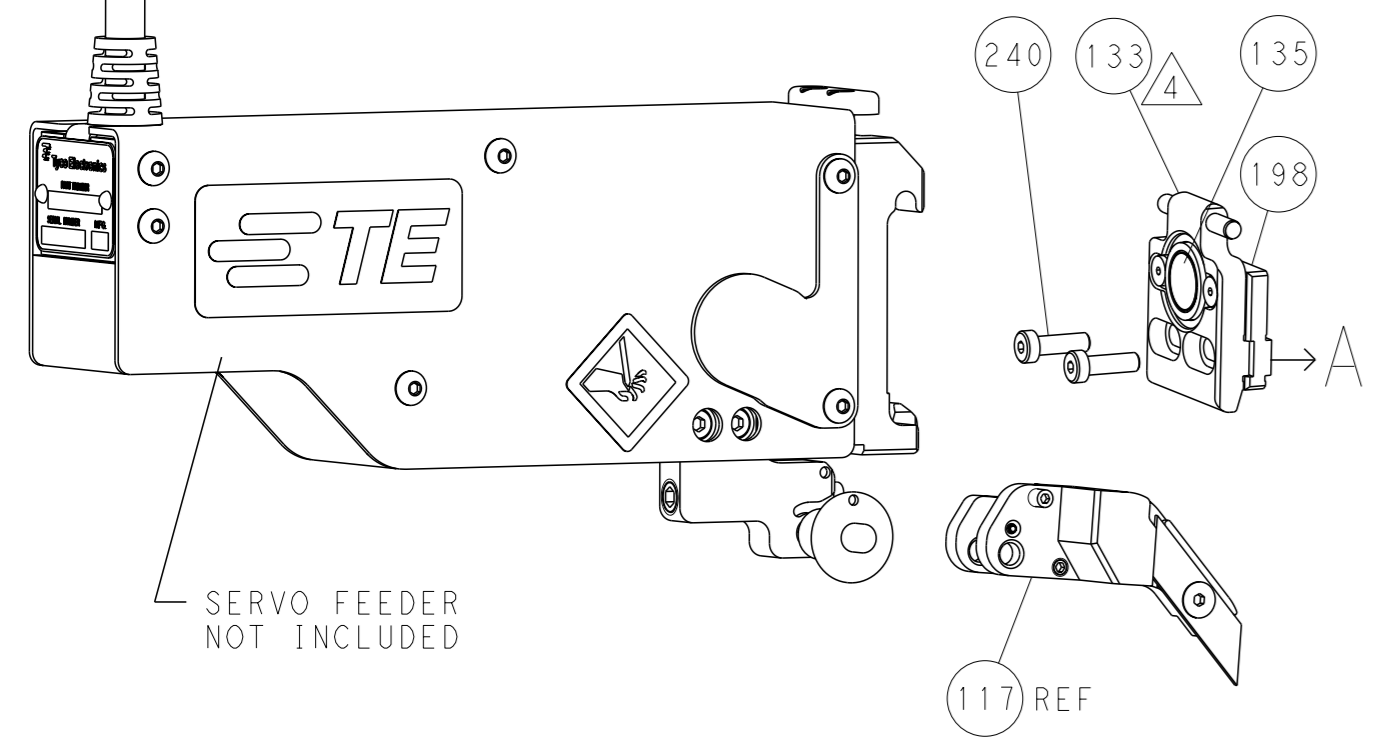
### FEED TYPE MECHANICAL



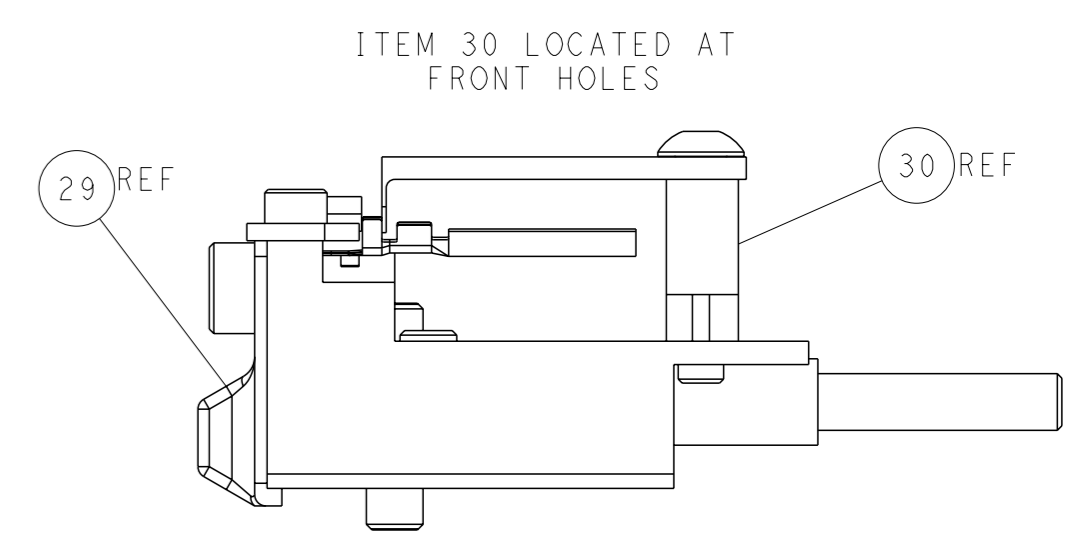
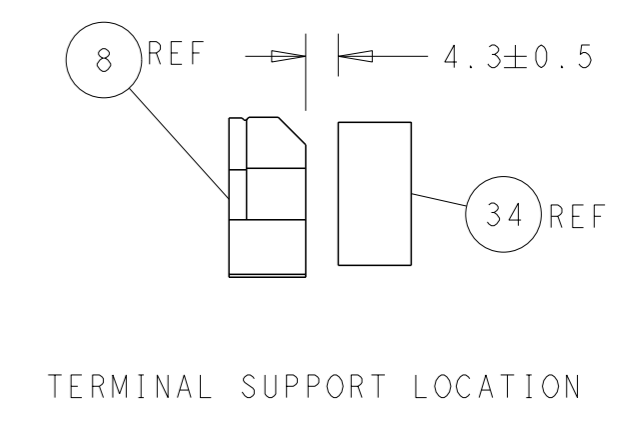
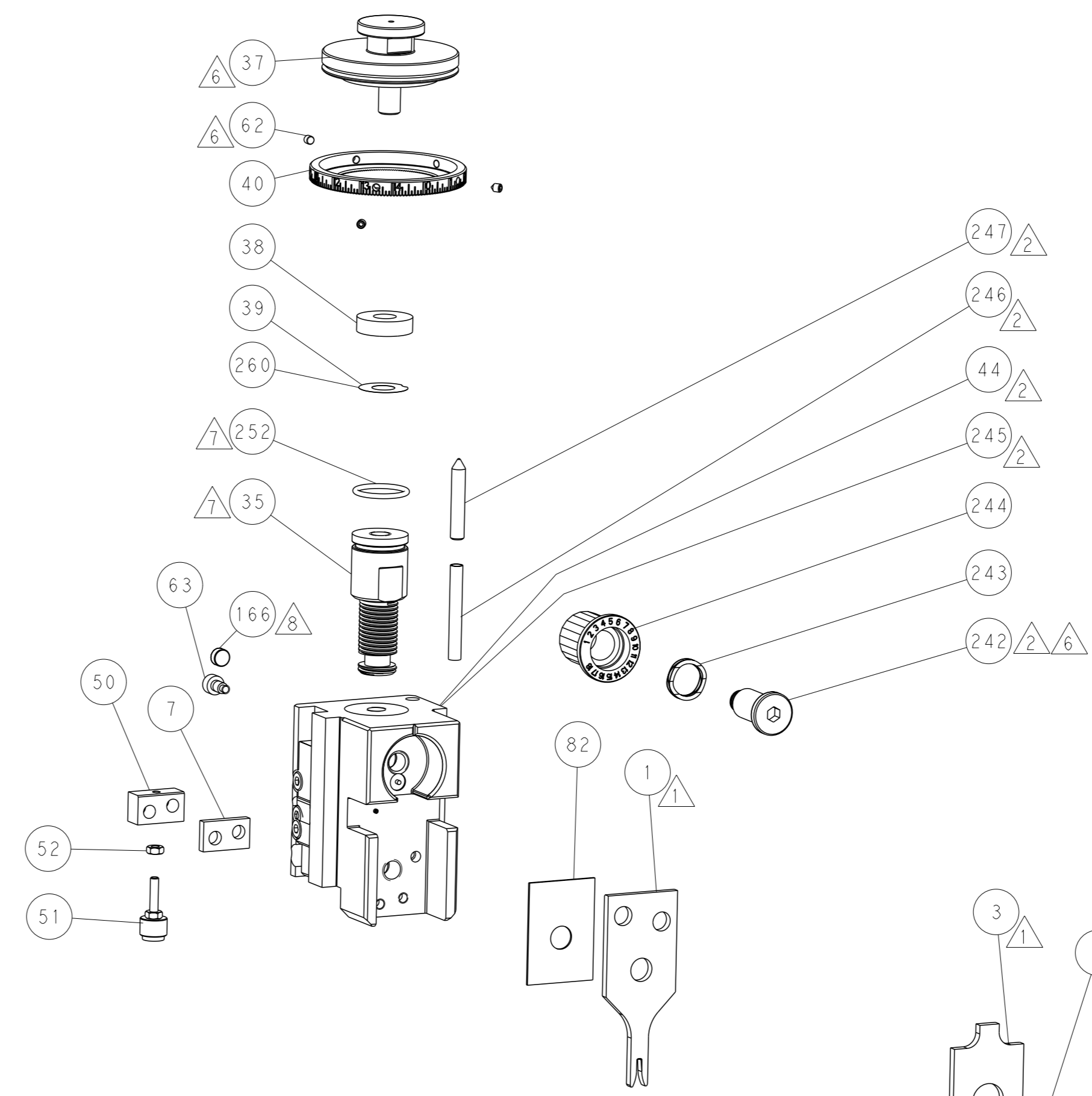
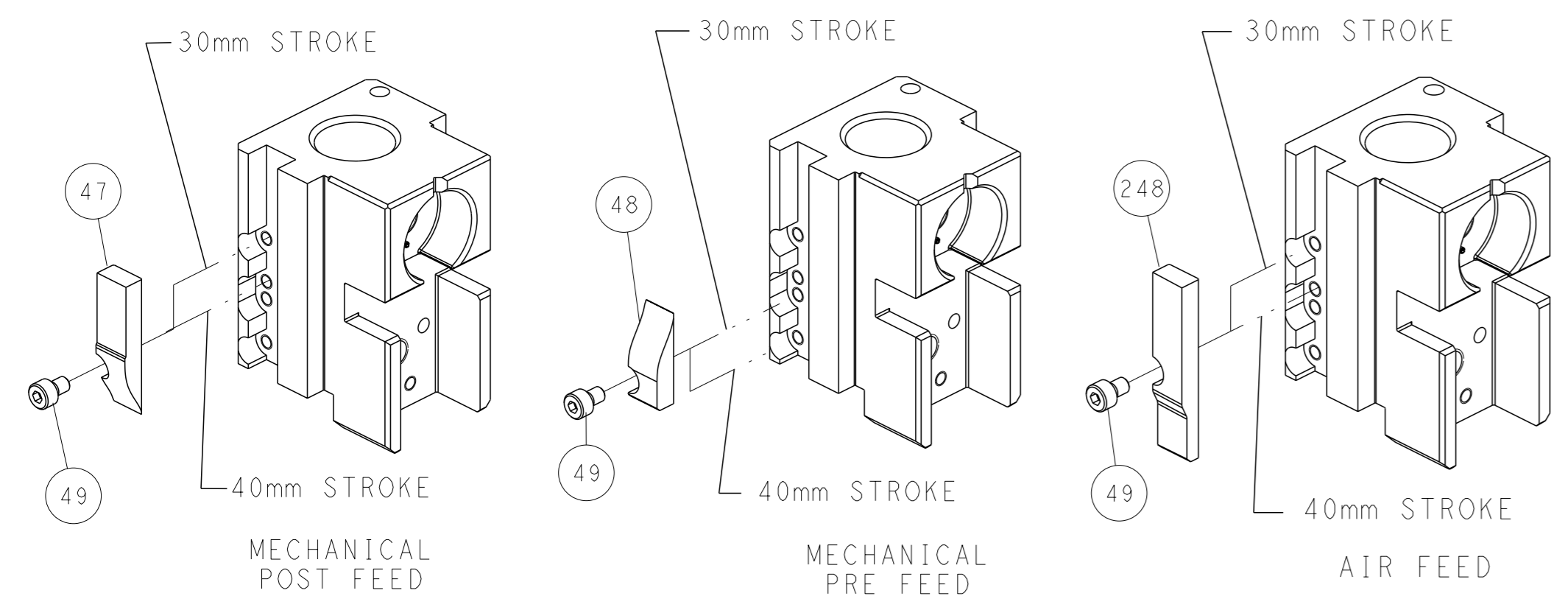
### PNEUMATIC



### SERVO LATCH PLATE



### CAM POSITIONS



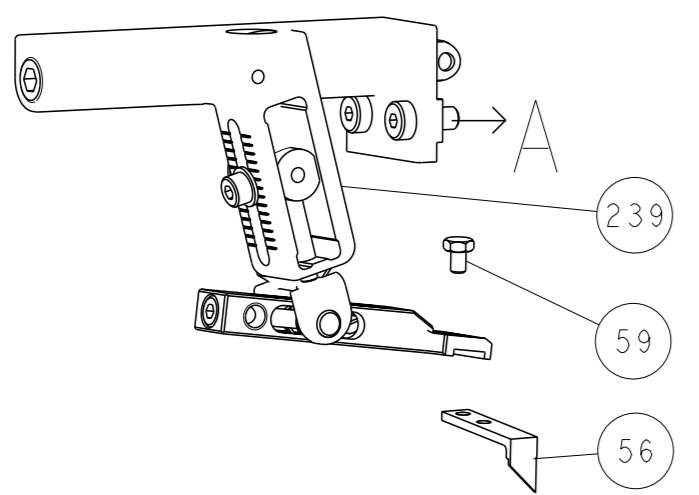
**ATLANTIC VERSION**  
 Shown on sheets 1 of 4 & 2 of 4  
 (Pacific version shown on sheets 3 of 4 & 4 of 4)

DIMENSIONS:		TOLERANCES UNLESS OTHERWISE SPECIFIED:		OWN BOB HIGMAN 29OCT2015	TE Connectivity Harrisburg, PA 17105-3608
mm	0 PLC ±	2 PLC ±	3 PLC ±	CHE T. ELBIN 29OCT2015	
MATERIAL:		FINISH:		APVD T. ELBIN 29OCT2015	NAME Ocean Side Feed Applicator
				APPLICATION SPEC	SIZE CAGE CODE DRAWING NO
				WEIGHT	A 00779 C=2836111
				Customer Accessible Production Drawing	SCALE 1:2 SHEET 2 of 4 REV A

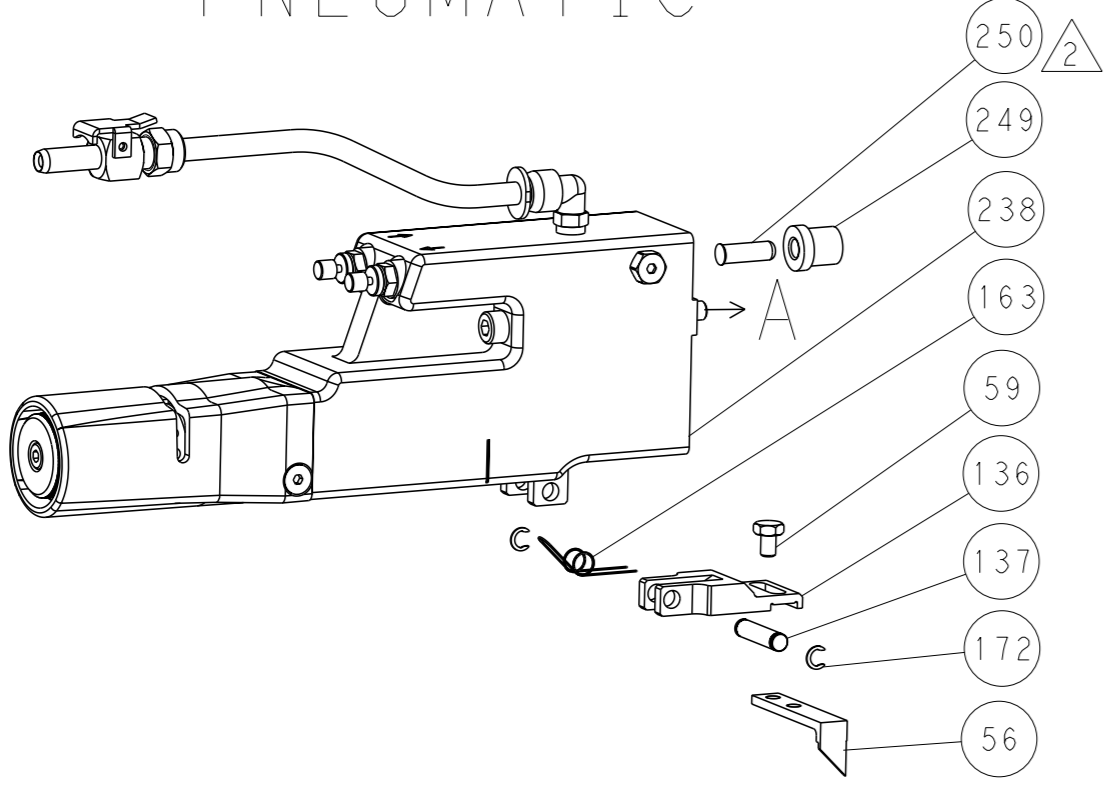


LOC		DIST		REVISIONS			
A	66	P	LYR	DESCRIPTION	DATE	OWN	APVD
		-		SEE SHEET 1			

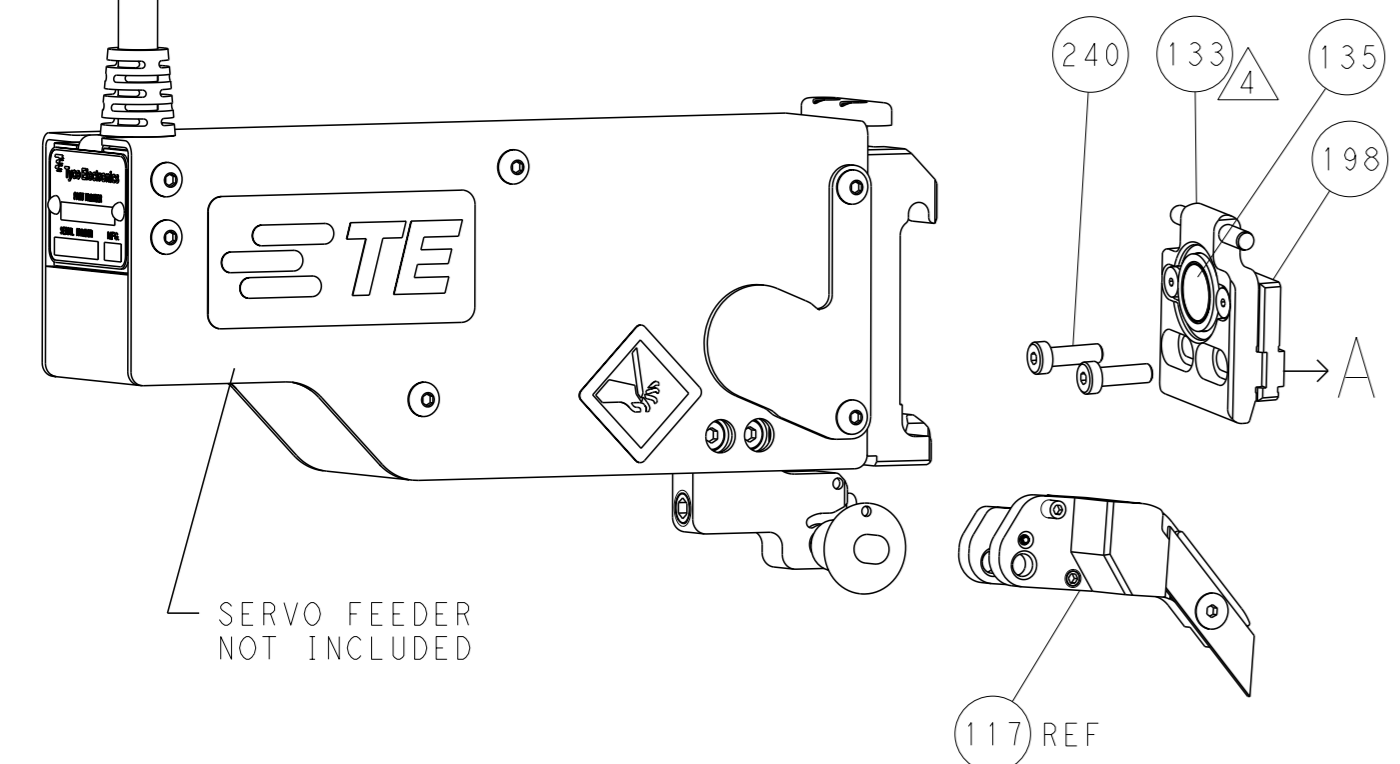
# FEED TYPE MECHANICAL



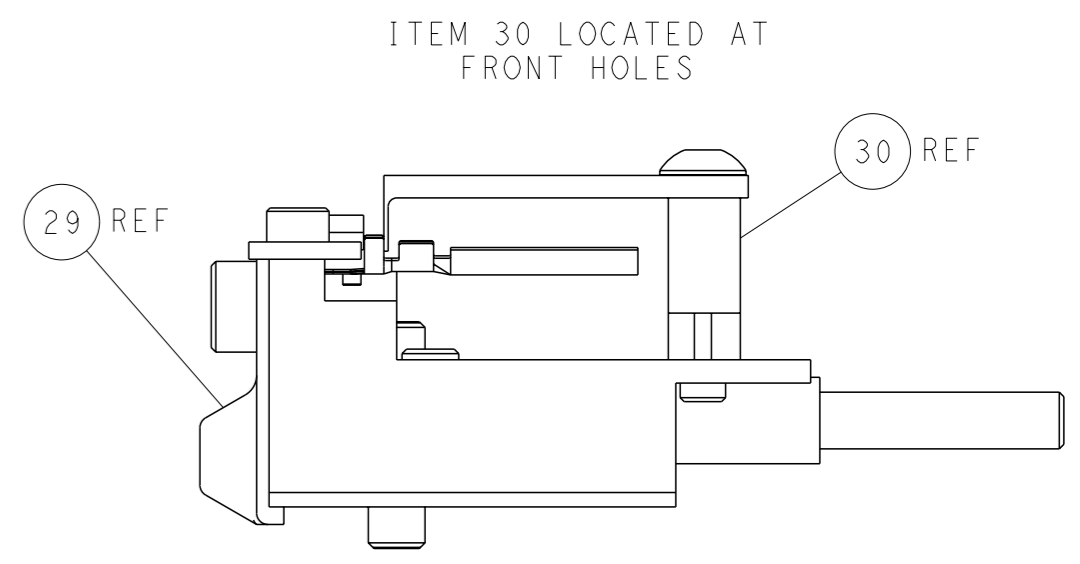
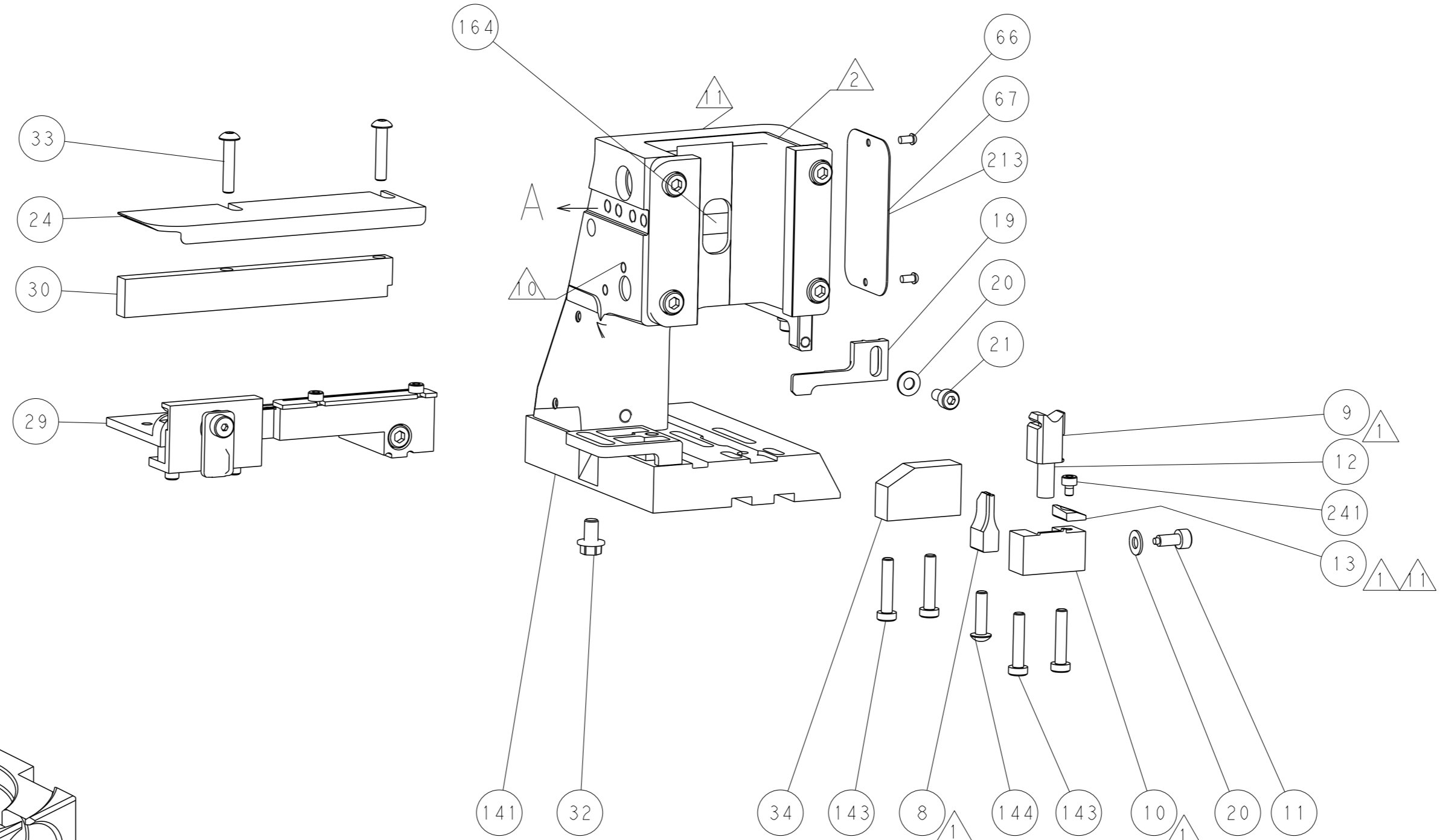
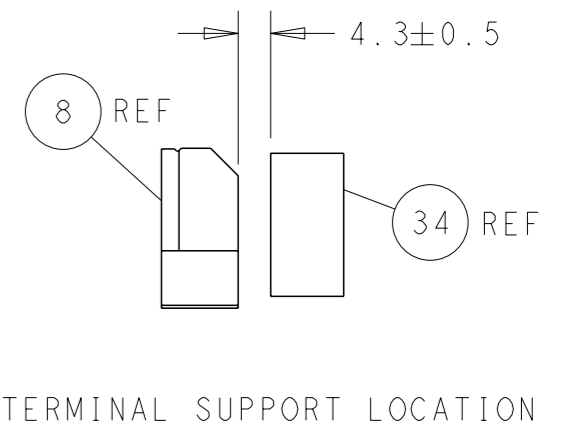
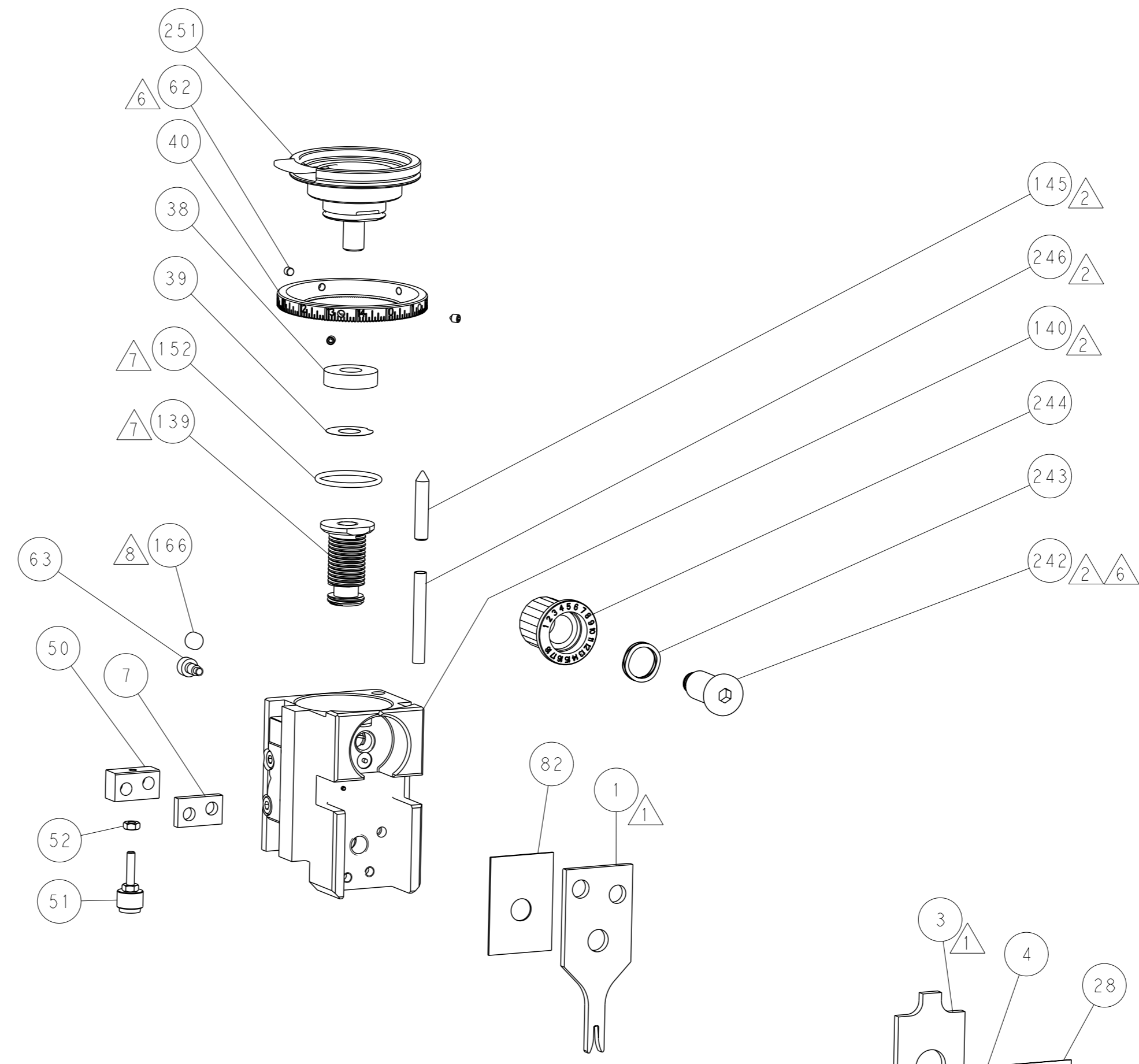
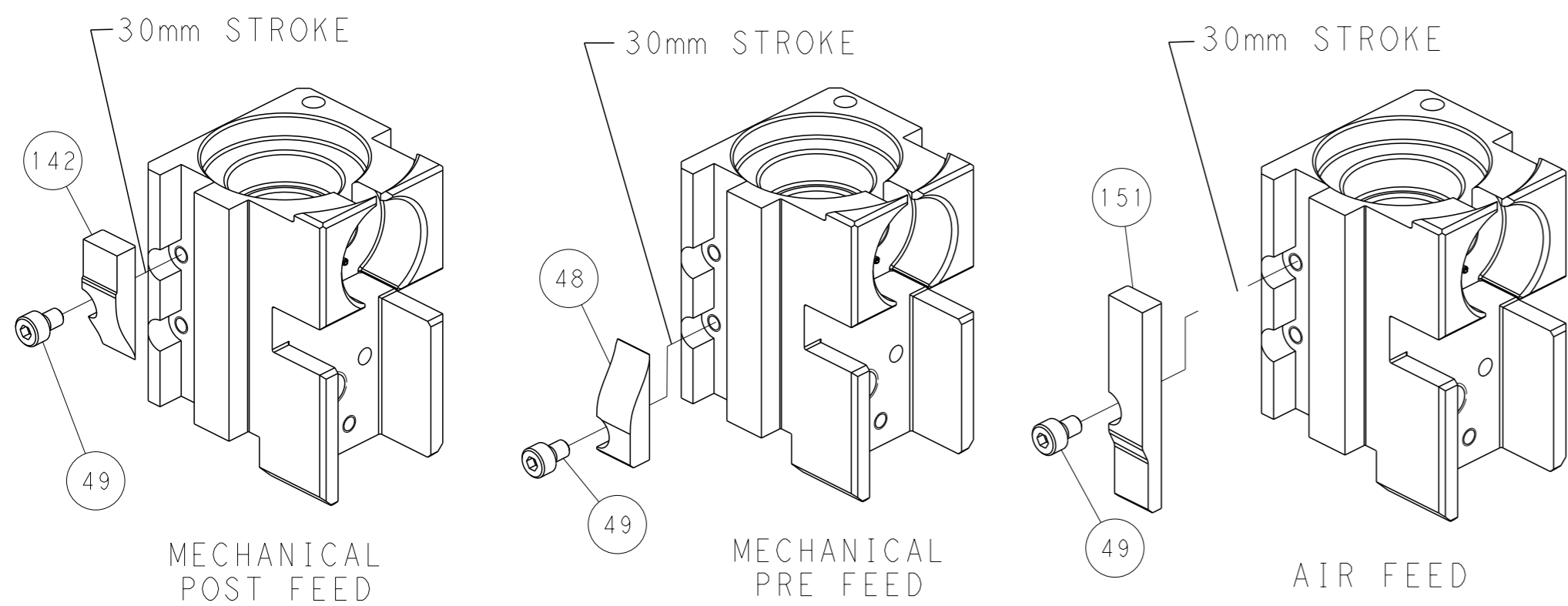
# PNEUMATIC



# SERVO LATCH PLATE



# CAM POSITIONS



FEED TRACK POSITION  
GUIDE BY INSULATION BARREL

**PACIFIC VERSION**  
 Shown on sheets 3 of 4 & 4 of 4  
 (Atlantic version shown on sheets 1 of 4 & 2 of 4)

<small>THIS DRAWING IS A CONTROLLED DOCUMENT FOR TYCO ELECTRONICS CORPORATION. IT IS SUBJECT TO CHANGE AND THE USER MUST CONTACT THE ENGINEERING ORGANIZATION SHOULD BE CONTACTED FOR THE LATEST REVISION.</small>		DWN BOB HIGMAN 29OCT2015 CHK T. ELBIN 29OCT2015 APVD T. ELBIN 29OCT2015	NAME <b>STE</b> TE Connectivity Harrisburg, PA 17105-3608
DIMENSIONS: mm 	TOLERANCES UNLESS OTHERWISE SPECIFIED: 0 PLC ± 1 PLC ± 2 PLC ± 3 PLC ± 4 PLC ± ANGLES FINISH ±	PRODUCT SPEC APPLICATION SPEC WEIGHT SCALE 1:2	SHEET 4 OF 4 REV A RESTRICTED TO
MATERIAL:		SIZE CAGE CODE DRAWING NO A 00779 C-2836111	Customer Accessible Production Drawing