

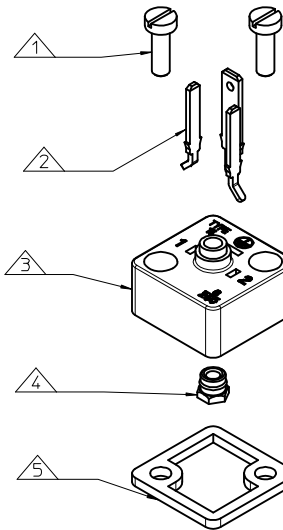
# B152000N2

SERIES \_\_\_\_\_  
 B15= FORM C \_\_\_\_\_  
 POLES \_\_\_\_\_  
 2= 2 POLE & 3= 3 POLE \_\_\_\_\_  
 CURVED BASE DIAMETER \_\_\_\_\_  
 000= FLAT BOTTOM \_\_\_\_\_  
 MATERIAL AND HOUSING COLOUR \_\_\_\_\_  
 N= PA6 BLACK \_\_\_\_\_  
 SCREW AND GASKET \_\_\_\_\_  
 2= NBR FLAT GASKET & SCREWS \_\_\_\_\_

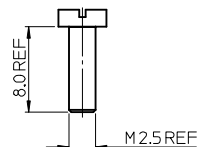
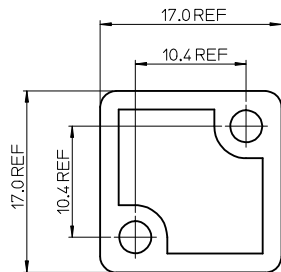
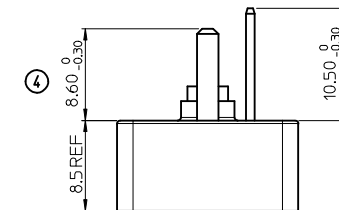
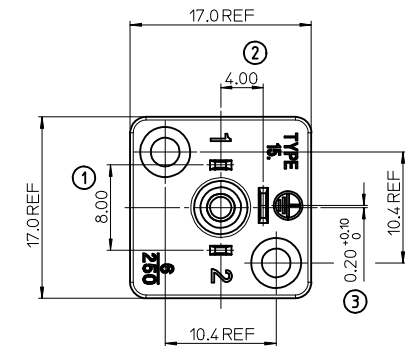
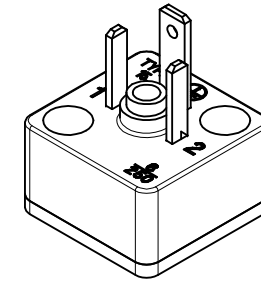
NOTES  
 1. PLEASE SEE TABLE FOR CURRENTLY CONFIGURED PART NUMBERS.  
 FOR SPECIFIC PART NUMBERS PLEASE CONTACT SALES OR CONSULT  
 THE INTELLIGENT PART NUMBERS IN THE TABLE ATTACHED.  
 2. FOR PACKAGING SEE PACKAGING SPEC PPK-121012-B15  
 3. PRODUCT SPEC: SEE PS-121201-001  
 4. TERMINALS BENT AFTER INSERTION FOR BEND ANGLE SEE TABLE  
 5. 2P+T BASE SHOWN IN DRAWING

LAST INSPECTION NUMBER 5

PART No.	mPm PART No.	DESCRIPTION	TERMINAL BEND ANGLE (°)
1210120009	B152000N2	TYPE C 2P BLACK, NBR FLAT GASKET & SCREWS	45
1210120010	B153000N2	TYPE C 3P BLACK, NBR FLAT GASKET & SCREWS	45



ITEM	DESCRIPTION
1	SCREWS
2	TERMINALS
3	HOUSING
4	INSERT
5	GASKET



<b>ORIGINAL RELEASE</b> EC NO: IFC2013-1132 2013/01/28 DRWN:DSHEA CHKD:SMGREVY 2013/01/29 APPR:STGRIFFIN 2013/02/08 DESCRIPTION	QUALITY SYMBOLS ▽=0 ▽=0	GENERAL TOLERANCES (UNLESS SPECIFIED) <table border="1"> <thead> <tr> <th></th> <th>mm</th> <th>INCH</th> </tr> </thead> <tbody> <tr> <td>4 PLACES</td> <td>± ---</td> <td>± ---</td> </tr> <tr> <td>3 PLACES</td> <td>± ---</td> <td>± ---</td> </tr> <tr> <td>2 PLACES</td> <td>± 0.10</td> <td>± ---</td> </tr> <tr> <td>1 PLACE</td> <td>± 0.20</td> <td>± ---</td> </tr> </tbody> </table> ANGULAR ± 2 °		mm	INCH	4 PLACES	± ---	± ---	3 PLACES	± ---	± ---	2 PLACES	± 0.10	± ---	1 PLACE	± 0.20	± ---	DIMENSION STYLE <b>MM ONLY</b>	SCALE <b>3:1</b>	DESIGN UNITS <b>METRIC</b>	THIRD ANGLE PROJECTION
		mm	INCH																		
4 PLACES	± ---	± ---																			
3 PLACES	± ---	± ---																			
2 PLACES	± 0.10	± ---																			
1 PLACE	± 0.20	± ---																			
DRAWN BY OSHEA DATE 2013/01/28 CHECKED BY DATE	TITLE <b>B15 SERIES BASES</b>		APPROVED BY STGRIFFIN DATE 2013/02/08	MATERIAL NO.	DOCUMENT NO. <b>SD-121012-009</b>	SHEET NO. 1 OF 1															

DRAFT WHERE APPLICABLE  
 MUST REMAIN  
 WITHIN DIMENSIONS

SEE CHART  
 THIS DRAWING CONTAINS INFORMATION THAT IS PROPRIETARY TO MOLEX  
 INCORPORATED AND SHOULD NOT BE USED WITHOUT WRITTEN PERMISSION