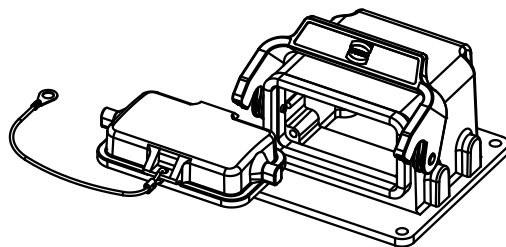
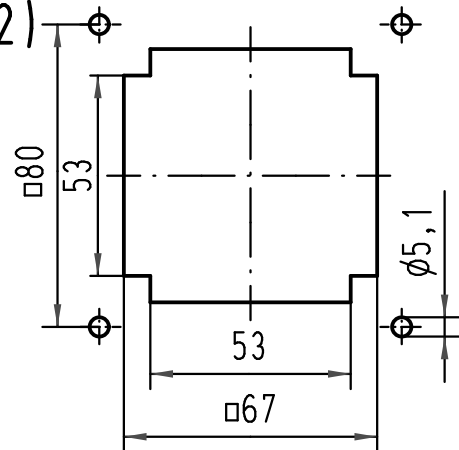


Montageauschnitt
panel cut out
(1:2)



Gehäuse ohne Oberfläche
housing without coating

| | | | | | | | |
|---|------|-------------------|--------------------------------|----------|--|--|-----|
| All Dimensions in mm Original Size DIN A 4 | | Techn. Character. | | | Nicht tolerierte Maße/Free size tolerances | | |
| | | | Dat. | Name | Maßstab/Scale 1:1 | Han 10B-agw-LB-AK-80 Motoranschlussgehäuse 80/10B motor connection housing 80/10B | |
| | | | Detail. | 12.05.10 | | | Pe |
| | | | Insp. | | | | Tie |
| | | | Stand. | | | | |
| A | | | HARTING Electric GmbH & Co. KG | | | TB 09 30 410 0983 Sub. 09 30 410 0983 v.09.12.97 | |
| Mod. | Dat. | Name | D-32339 Espelkamp | | | | |
| | | | | | | Blatt/ page | |