

CLASSIFICATION	Application Note	No. DS-SG-9320- AppNote	REV. 0.2
SUBJECT	Connection scenarios with PAN9320	PAGE	1 of 8
CUSTOMER'S CODE PAN9320	PANASONIC'S CODE PAN9320	DATE	17.08.2015

Application Note

Connection possibilities



CLASSIFICATION	Application Note	No. DS-SG-9320- AppNote	REV. 0.2
SUBJECT	Connection scenarios with PAN9320	PAGE	2 of 8
CUSTOMER'S CODE PAN9320	PANASONIC'S CODE PAN9320	DATE	17.08.2015

Scope of this document:

This document describes the different possibilities how PAN9320 can be set up in a network infrastructure.

As PAN9320 has the simultaneous AP and Client capability. Multiple setups are possible, this document describes three variants.

Precondition is a system of three Wifi-devices. A Customer Device (CD) with simultaneous AP and Client ability, a common internet router, and as example a sensor device without keyboard or display with PAN9320.

All the devices could communicate via Wifi. The customer device could be laptop or any other device holding a display or input device like a touchpad.

As the CD is a human machine interface the user could configure all the Wifi parameters of the CD itself but also the PAN9320-Device by remote wireless connection.

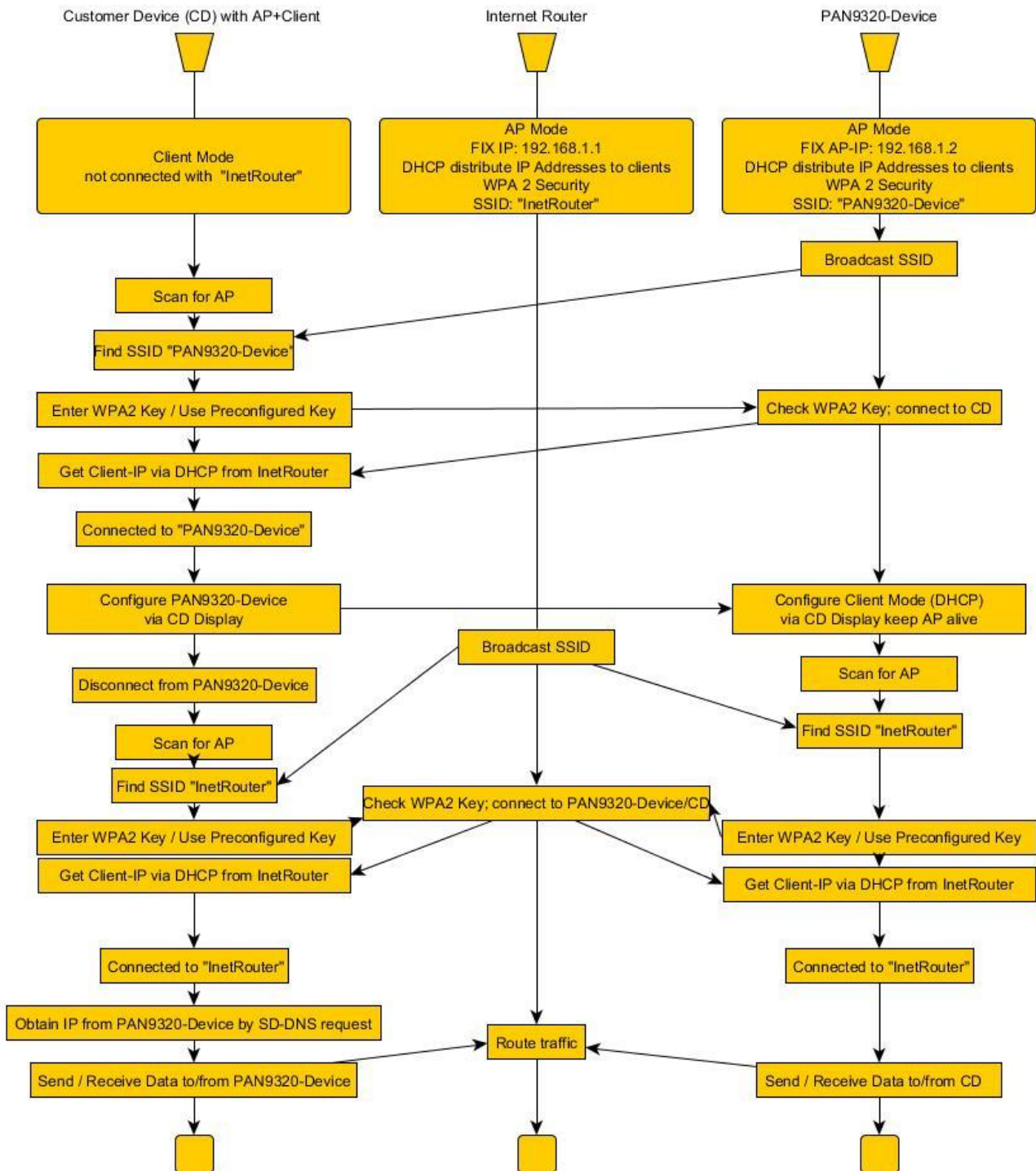
The PAN9320-Device is ment to be an example for non-user interface devices without a display like a router. Connected with a host controller to PAN9320 demonstrates a PAN9320-Device Application.

The internet router is a typical home are network router, for access to the Internet.

The following three scenarios show how connections could be established.

CLASSIFICATION	Application Note	No. DS-SG-9320- AppNote	REV. 0.2
SUBJECT	Connection scenarios with PAN9320	PAGE	3 of 8
CUSTOMER'S CODE PAN9320	PANASONIC'S CODE PAN9320	DATE	17.08.2015

1.) Scenario



CLASSIFICATION	Application Note	No. DS-SG-9320- AppNote	REV. 0.2
SUBJECT	Connection scenarios with PAN9320	PAGE	4 of 8
CUSTOMER'S CODE PAN9320	PANASONIC'S CODE PAN9320	DATE	17.08.2015

Exception „Connection to router lost“:

At connection-to-router-lost, PAN9320-Device could be set back to AP Mode or scan for reconnection as a client to router.

Due to routing table most routers keep the associated IPs once corresponding to the unique MAC addresses.

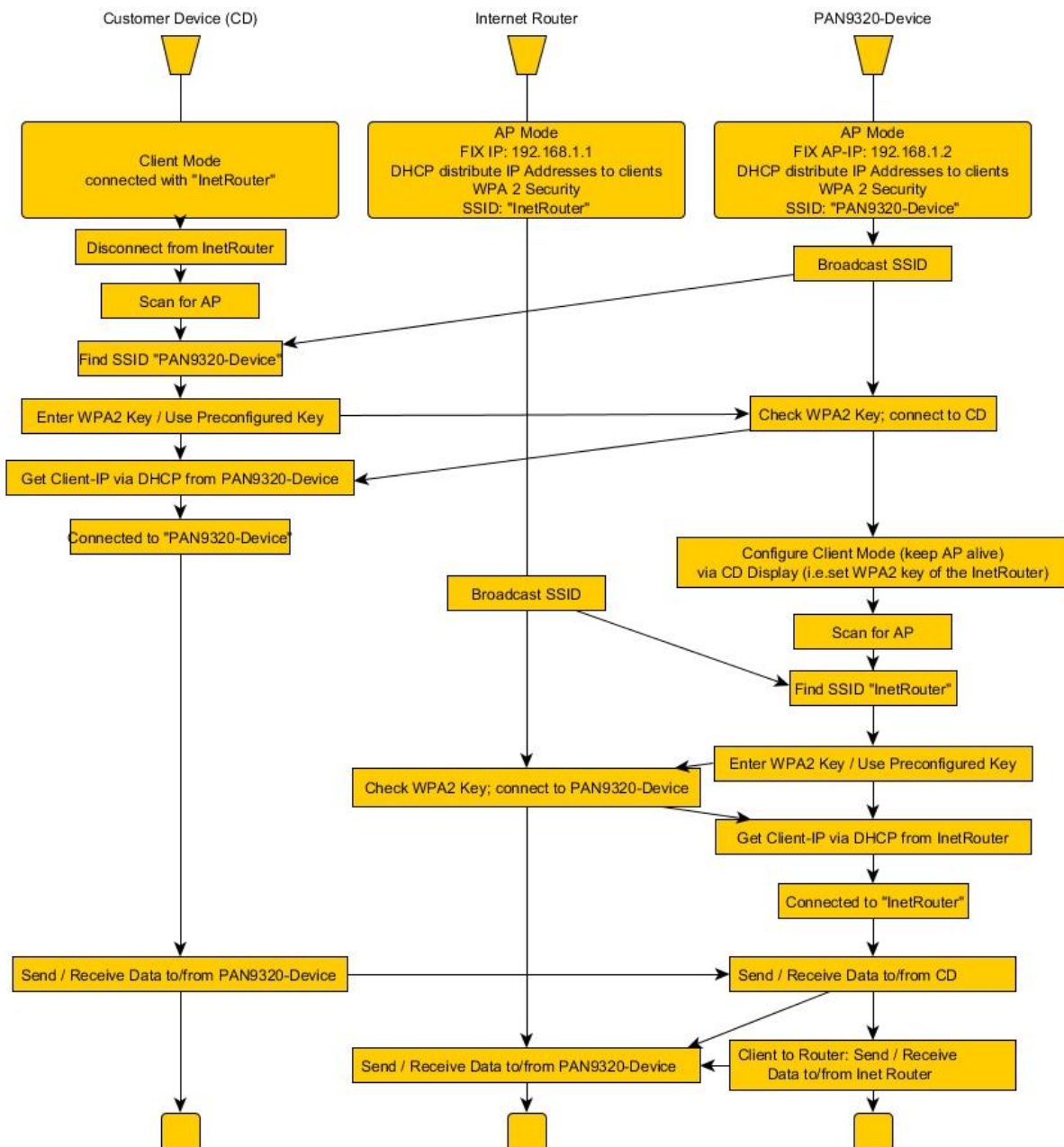
Otherwise the PAN9320-Device IP could be obtained via DNS name request by CD to get the actual IP.

CLASSIFICATION	Application Note	No. DS-SG-9320- AppNote	REV. 0.2
SUBJECT	Connection scenarios with PAN9320	PAGE	5 of 8
CUSTOMER'S CODE PAN9320	PANASONIC'S CODE PAN9320	DATE	17.08.2015

2.) Scenario

Case 1: Router connection could be lost but CD and TempSensor are still connected.

Case 2: If at least TempSensor is connected at router, the user could monitor the temperature with phone app from everywhere in the house.

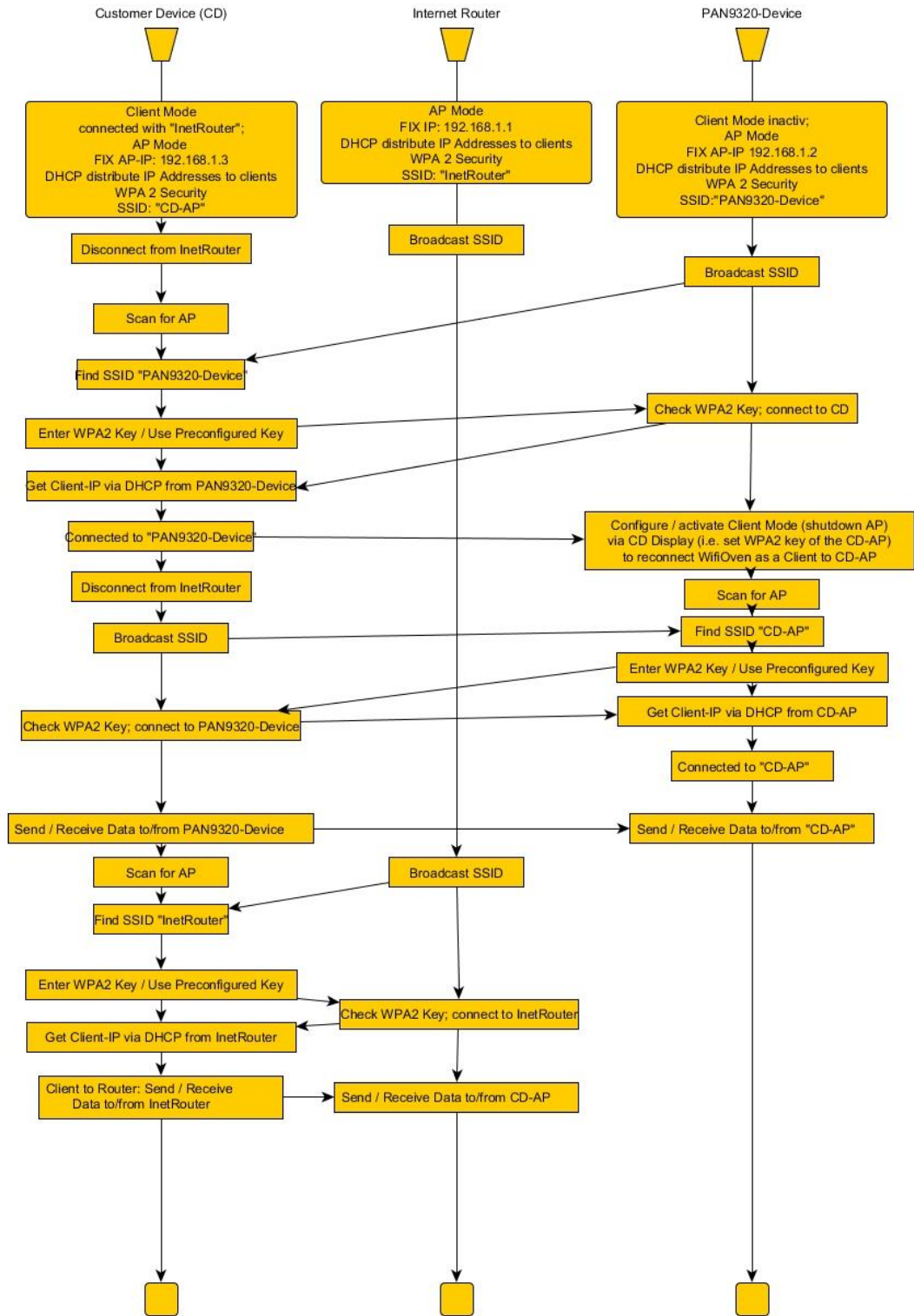


CLASSIFICATION	Application Note	No. DS-SG-9320- AppNote	REV. 0.2
SUBJECT	Connection scenarios with PAN9320	PAGE	6 of 8
CUSTOMER'S CODE PAN9320	PANASONIC'S CODE PAN9320	DATE	17.08.2015

3) Scenario

Case 1: Router connection could be lost but CD and PAN9320-Device are still connected.

CLASSIFICATION	Application Note	No. DS-SG-9320- AppNote	REV. 0.2
SUBJECT	Connection scenarios with PAN9320	PAGE	7 of 8
CUSTOMER'S CODE PAN9320	PANASONIC'S CODE PAN9320	DATE	17.08.2015



General Information

CLASSIFICATION	Application Note	No. DS-SG-9320- AppNote	REV. 0.2
SUBJECT	Connection scenarios with PAN9320	PAGE	8 of 8
CUSTOMER'S CODE PAN9320	PANASONIC'S CODE PAN9320	DATE	17.08.2015

© Panasonic Electronic Devices Europe GmbH 2010.
All rights reserved.

Panasonic does not warranty and accepts no liability for the information contained herein. The information contained in this document is subject to change without notice. Modules containing "ES" in the series number are Engineering Samples -- i.e. PANxxxxES. This means, the design of this product is not yet concluded. Engineering Samples may be partially or fully functional, and there may be differences to be published Data Sheet.

Engineering Samples are not qualified and are not to be used for reliability testing or series production.

Disclaimer:

Customer acknowledges that samples may deviate from the Data Sheet and may bear defects due to their status of development and the lack of qualification mentioned above.

Panasonic rejects any liability or product warranty for Engineering Samples. In particular, Panasonic disclaims liability for damages caused by the use of the Engineering Sample other than for Evaluation Purposes, particularly the installation or integration in another product to be sold by Customer, deviation or lapse in function of Engineering Sample, improper use of Engineering Samples.

Panasonic disclaims any liability for consequential and incidental damages.