

C. Webster 11-30-90  
APPROVED/DATE

0  
REV

SAFETY ORGANIZATION(S):

THIS FILTER HAS BEEN FORMALLY RECOGNIZED, CERTIFIED OR APPROVED BY THE LISTED AGENCY. THEREFORE, ALL TEST/REQUIREMENTS SPECIFIED IN THE LATEST REVISION OF THE FOLLOWING AGENCY STANDARDS HAVE BEEN MET.

UL RECOGNIZED  
UL 1283  
CSA CERTIFIED (PENDING)  
CSA 22.2, NO.0,0,4,8  
VDE APPROVED (PENDING)  
VDE 565-3

OPERATING SPECIFICATIONS:

LINE VOLTAGE/CURRENT:  
1 AMP., 120/250 VAC  
1 AMP./40°C, 250 VAC  
50-60Hz

LINE FREQUENCY:

MAX. LEAKAGE CURRENT, EACH  
LINE TO GROUND  
.25 mA @ 120V 60 Hz  
.48 mA @ 250V 50 Hz

OPERATING AMBIENT TEMP. RANGE:

-10°C TO +40°C @ RATED CURRENT, I<sub>r</sub>

IN AN AMBIENT, T<sub>a</sub>, HIGHER THAN 40°C, THE MAXIMUM OPERATING CURRENT, I<sub>o</sub>, IS AS FOLLOWS:

$$I_o = I_r \sqrt{\frac{85-T_a}{45}}$$

RELIABILITY SPECIFICATIONS:

STORAGE TEMPERATURE:  
-40°C TO +85°C  
HUMIDITY:  
21 DAYS @ 40°C 95% RH  
CURRENT OVERLOAD TEST:  
6 TIMES RATED CURRENT FOR 8 SECONDS

TEST SPECIFICATIONS:

INDUCTANCE:  
1.86 mH NOMINAL  
CAPACITANCE: (MEASURED @ 1 KHz, 0.25 VAC MAX., 25°C ±1°C)  
LINE TO GROUND:  
.003µF ±20%  
LINE TO LINE:  
.81µF ±20%  
DISCHARGE RESISTOR  
330KΩ  
LINE/GROUND AND LINE/LINE  
6000 MΩ (MIN) AT 100 VDC  
INSULATION RESISTANCE  
20°C AND 50% RH

RECOMMENDED RECEIVING INSPECTION HIPOT:

LINES TO GROUND:  
2250 VDC FOR 1 MINUTE  
LINE TO LINE:  
1450 VDC FOR 1 MINUTE

FILTER APPROVAL:

THE BEST WAY TO SELECT AND QUALIFY A FILTER IS FOR YOUR ENGINEERING TO TEST THE UNIT IN YOUR EQUIPMENT.

TOLERANCE EXCEPT AS NOTED

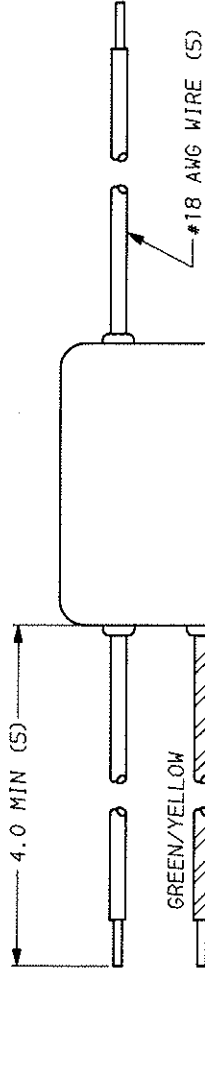
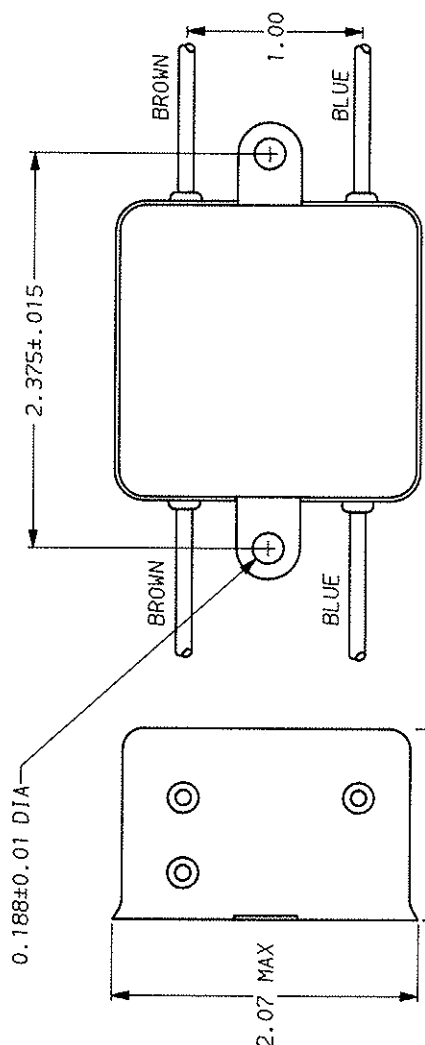
DECIMAL: .XX .XX .X ANGLES  
ENGLISH: ±.025 ± 1°  
METRIC: ±

MATERIAL:

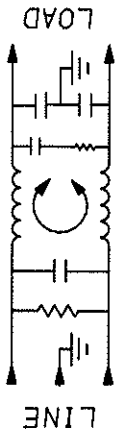
AS SUPPLIED

FINISH:

AS SUPPLIED



0.250±0.062 STRIP



FREQUENCY MHz	.15	.5	1	2	5	10	20	30
COMMON	18	32	40	45	45	45	52	40
DIFF.	20	50	65	60	53	48	48	48

50Ω - 50Ω (MINIMUM) INSERTION LOSS  
This document is proprietary to CORCOM INC. and is not to be reproduced nor used for manufacturing purposes except on CORCOM's order or prior written consent.



POWER LINE FILTER

SCALE	DATE	DRG. NO.	REV.
NTS	11-5-90		
DRW. BY	CFW	CFW	
			1 EDK3.00