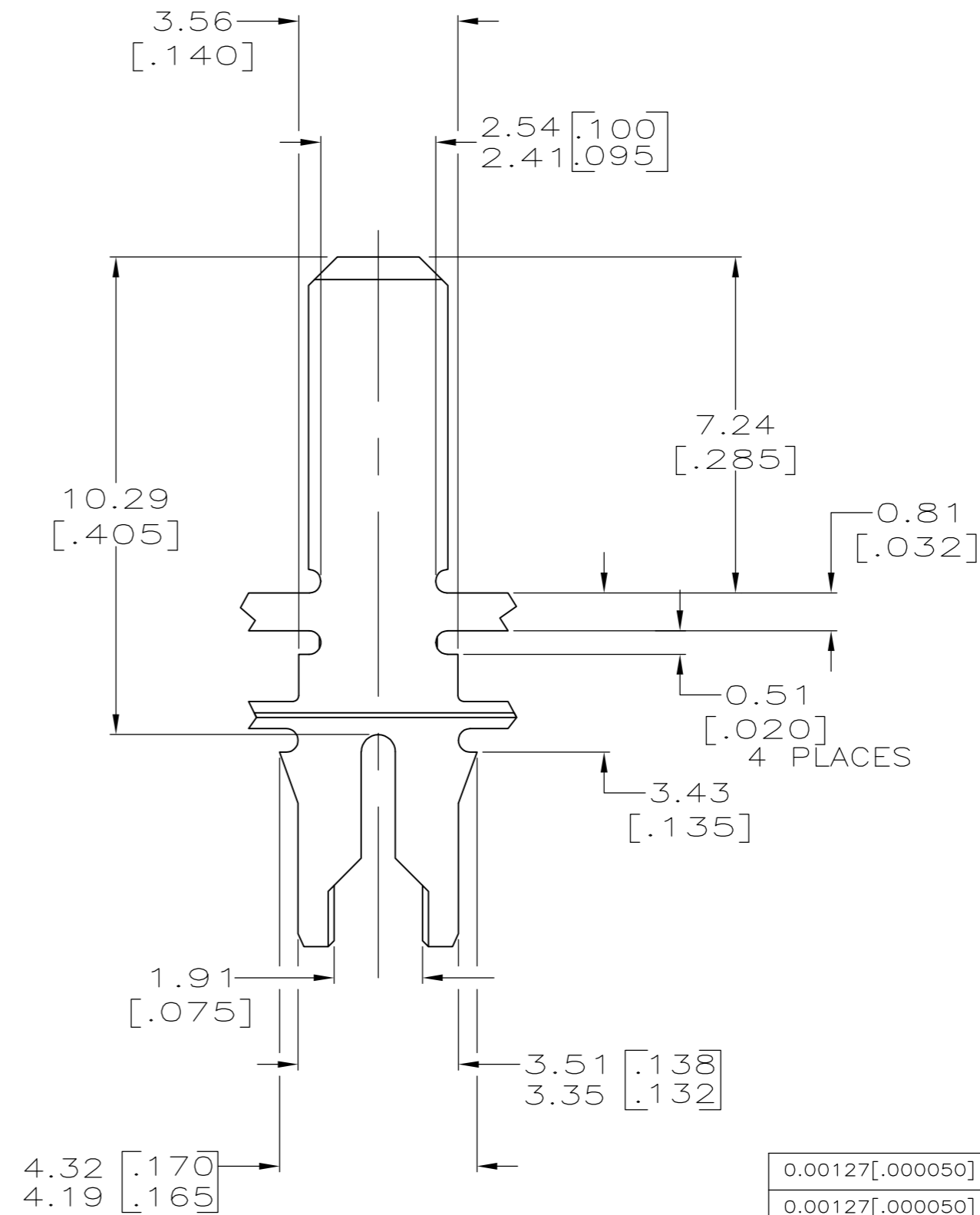
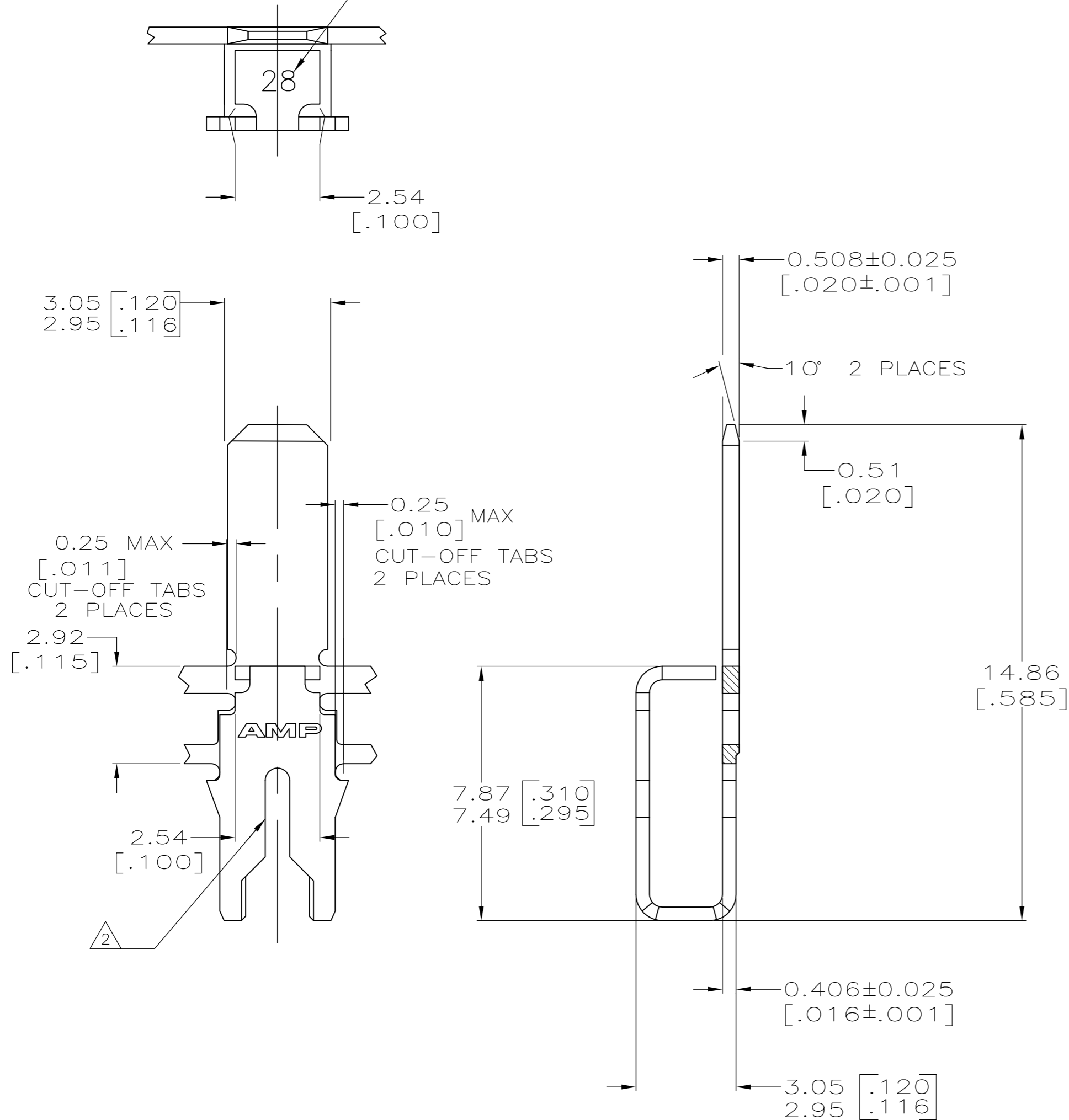


THIS DRAWING IS UNPUBLISHED. RELEASED FOR PUBLICATION
 © COPYRIGHT BY TYCO ELECTRONICS CORPORATION. ALL RIGHTS RESERVED.

LOC		DIST		REVISIONS			
P	LTR	DESCRIPTION	DATE	DWN	APVD		
		E1	REVISED PER ECR-07-018614	10AUG07	HMR	KR	

- 1 CONTINUOUS STRIP ON REELS WITH TERMINALS LOCATED ON 5.59±0.08 [.220±.003] CENTERS.
- 2 SLOT TERMINATES A SINGLE 0.8-0.9mm² [#18] AWG TIN PLATED SOLID, FUSED STRANDED OR STRANDED (7, 16, OR 19 STRANDS) WIRE WITH CROSS-LINKED POLYETHYLENE INSULATION, 2.26[.089] MAX DIA.
- 3 MTA PRODUCT SPEC IS 108-1051 MAG-MATE PRODUCT SPEC IS 108-2012
- 4 MTA APPLICATION SPEC IS 114-1020 MAG-MATE APPLICATION SPEC IS 114-2046
- 5 TERMINALS ARE STRESS RELIEVED
- 6 PRELIMINARY - NOT FOR PRODUCTION.

IDENTIFICATION NUMBER 28 FOR LEAD WIRE RANGE



0.00127[.000050] MIN NICKEL	REVERSE	6	63974-4
0.00127[.000050] MIN NICKEL	STANDARD	6	63974-3
0.002032[.000080] MIN TIN	REVERSE		63974-2
0.002032[.000080] MIN TIN	STANDARD		63974-1
FINISH		REELING	PART NUMBER

THIS DRAWING IS A CONTROLLED DOCUMENT.		DWN R.GRZYBOWSKI 9APR97	Tyco Electronics Corporation Harrisburg, PA 17105-3608	
DIMENSIONS: mm [INCHES]		CHK M.S.FEHER 9APR97	NAME TAB, 3.00[.118] SERIES MTA TH /MAG-MATE TM	
TOLERANCES UNLESS OTHERWISE SPECIFIED:		APVD KURT A. RANDOLPH 9APR97	DRAWING NO 96-1039-111/4	
0 PLC ± -		PRODUCT SPEC 3	SIZE A2	CAGE CODE 00779
1 PLC ± -		APPLICATION SPEC 96-1039-111/4	SCALE 8:1	SHEET 1 OF 1
2 PLC ± 0.25[.010]		FINISH SEE TABLE 5	REV E1	
3 PLC ± -				
4 PLC ± -				
ANGLES ± -				
MATERIAL H04 PRE-MILLED BRASS		WEIGHT -	CUSTOMER DRAWING	