

Data Sheet

360273

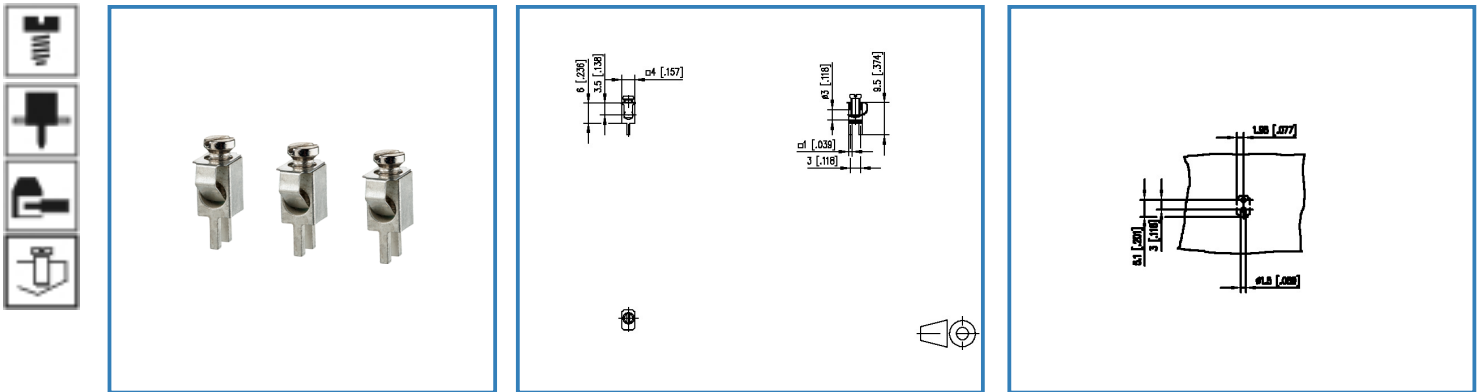
Page 1/4

P/N

360273

2017/08/28

Illustration



see enlarged drawing at the end of the document

Product specification

- screw type terminal block, solderable, double solder pins
- direction of connection 90°
- wire protector
- color metallike
- open construction, screw brought down by hand (transport safety)

© 2017 METZ CONNECT - Technische Änderungen vorbehalten! Subject to modifications! Sous réserve de modifications techniques!



Data Sheet

360273

Technical Data


General Data

Tightening torque SEV	0.5 Nm
Tightening torque UL	3.5 lb-in
Solder pin length	3.5 mm
min. number of poles	1
max. number of poles	1

Connection data

Rated wiring solid wire	0.13 - 2 mm ² / AWG 26 - 14
Rated wiring stranded wire	0.13 - 1.5 mm ² / AWG 26 - 14

Approvals

 A / AWG	15 / 26 - 14
---	--------------

Material

terminal body material	CuZn
terminal body surface	Ni + Sn
screw surface	Zn Cr(VI)-frei/free
wire protector material	CuSn
wire protector surface	Sn
screw thread	M2.6

General

solderability	Acc. to JEDEC JESD22-B102E 245°C/5s
Tolerance	ISO 2768 -mH

© 2017 METZ CONNECT - Technische Änderungen vorbehalten! Subject to modifications! Sous réserve de modifications techniques!

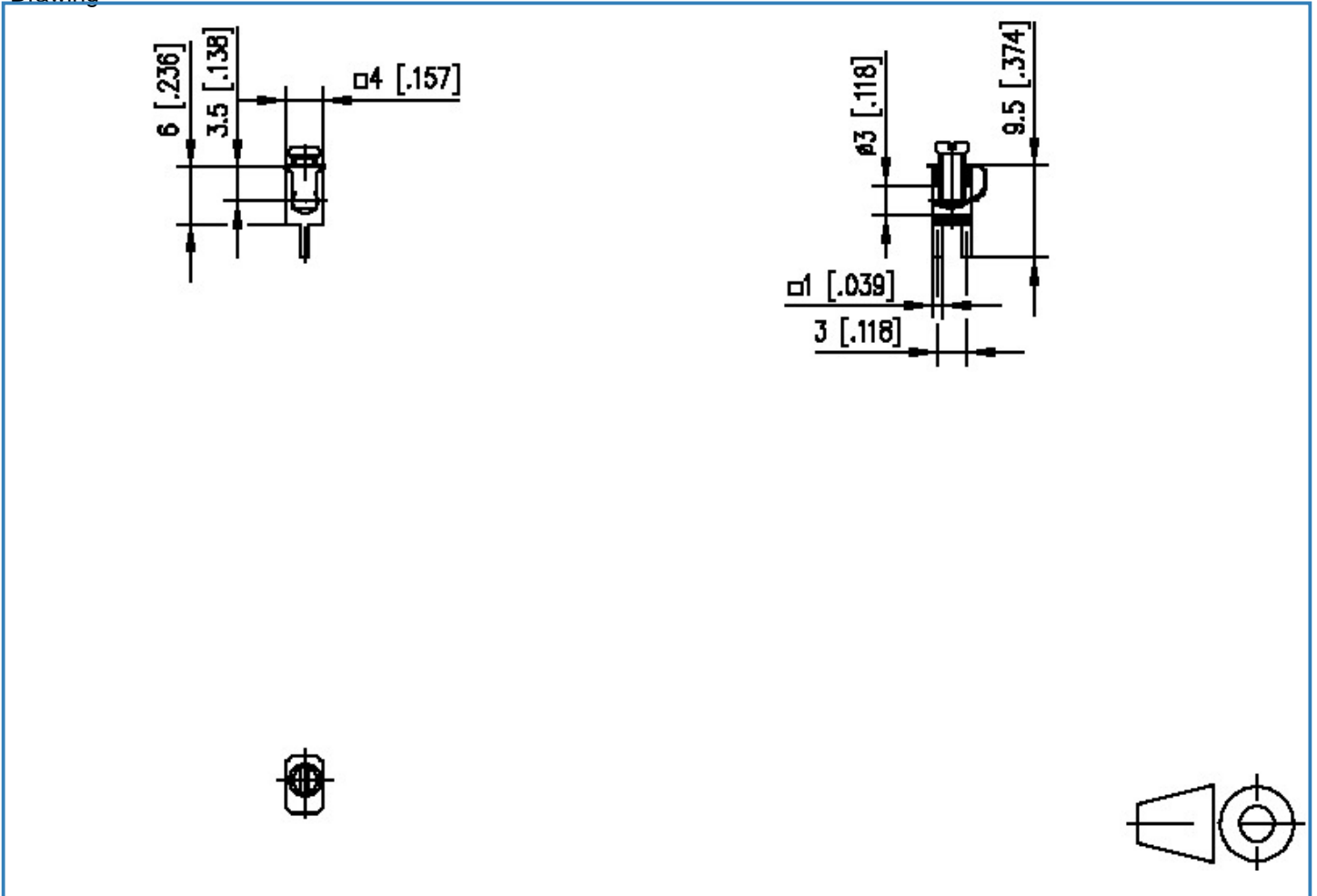


Data Sheet

360273

Illustration

Drawing



Data Sheet

360273

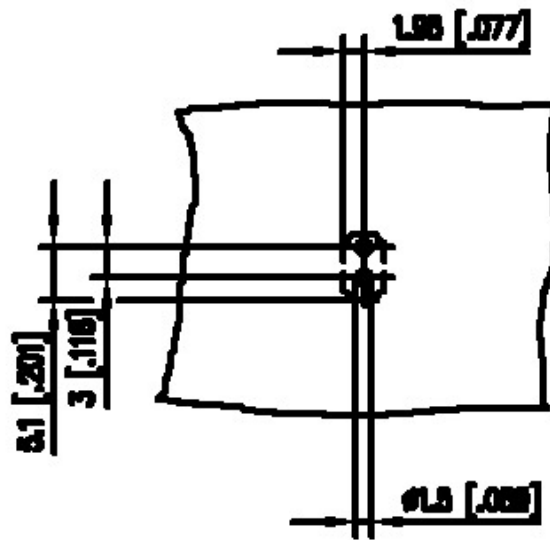
Page 4/4

P/N

360273

2017/08/28

PCB Layout



© 2017 METZ CONNECT - Technische Änderungen vorbehalten! Subject to modifications! Sous réserve de modifications techniques!

