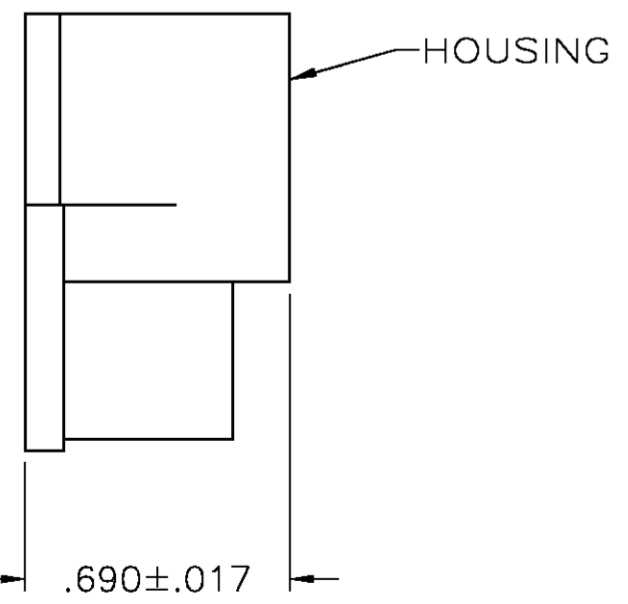
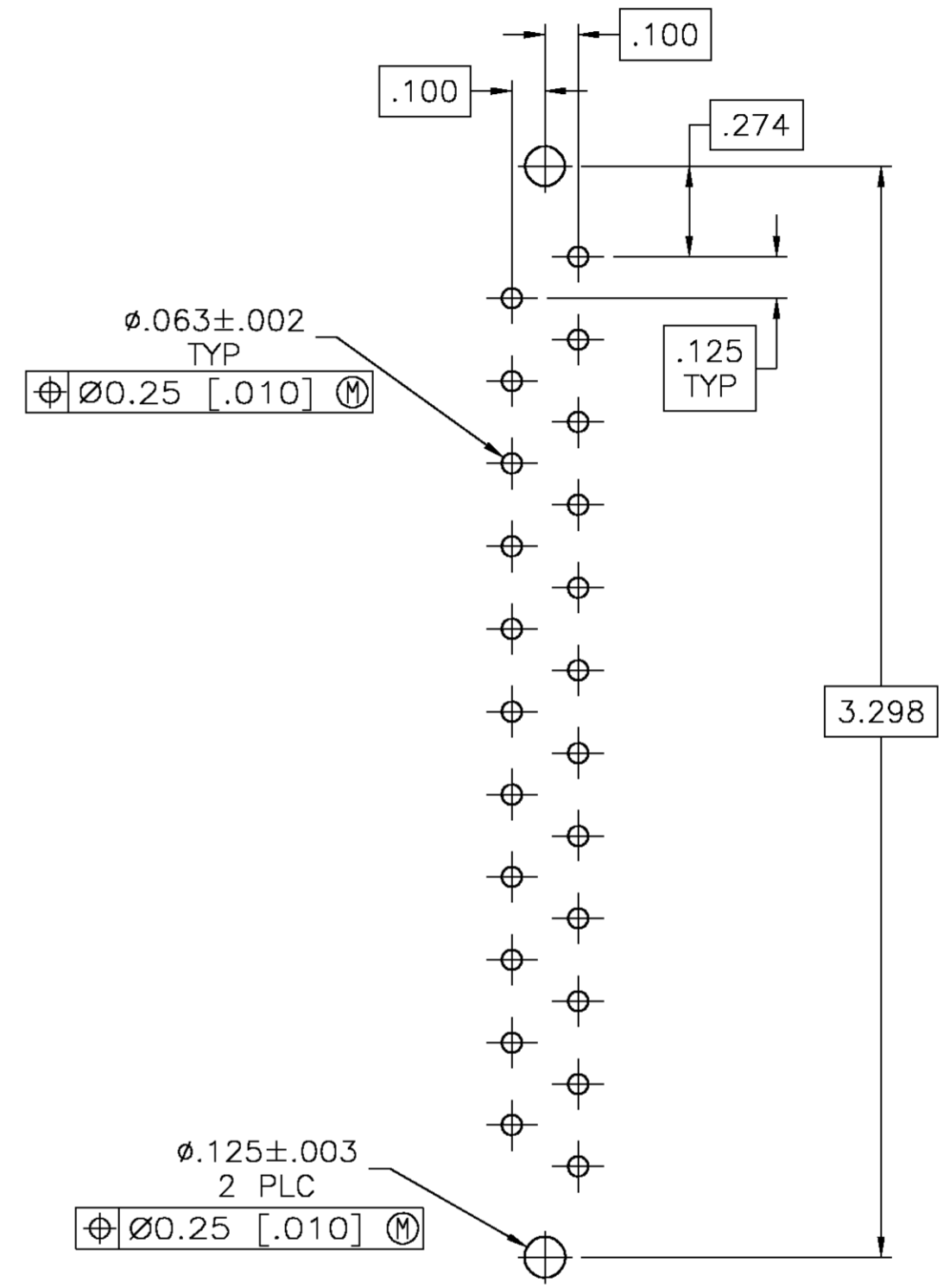
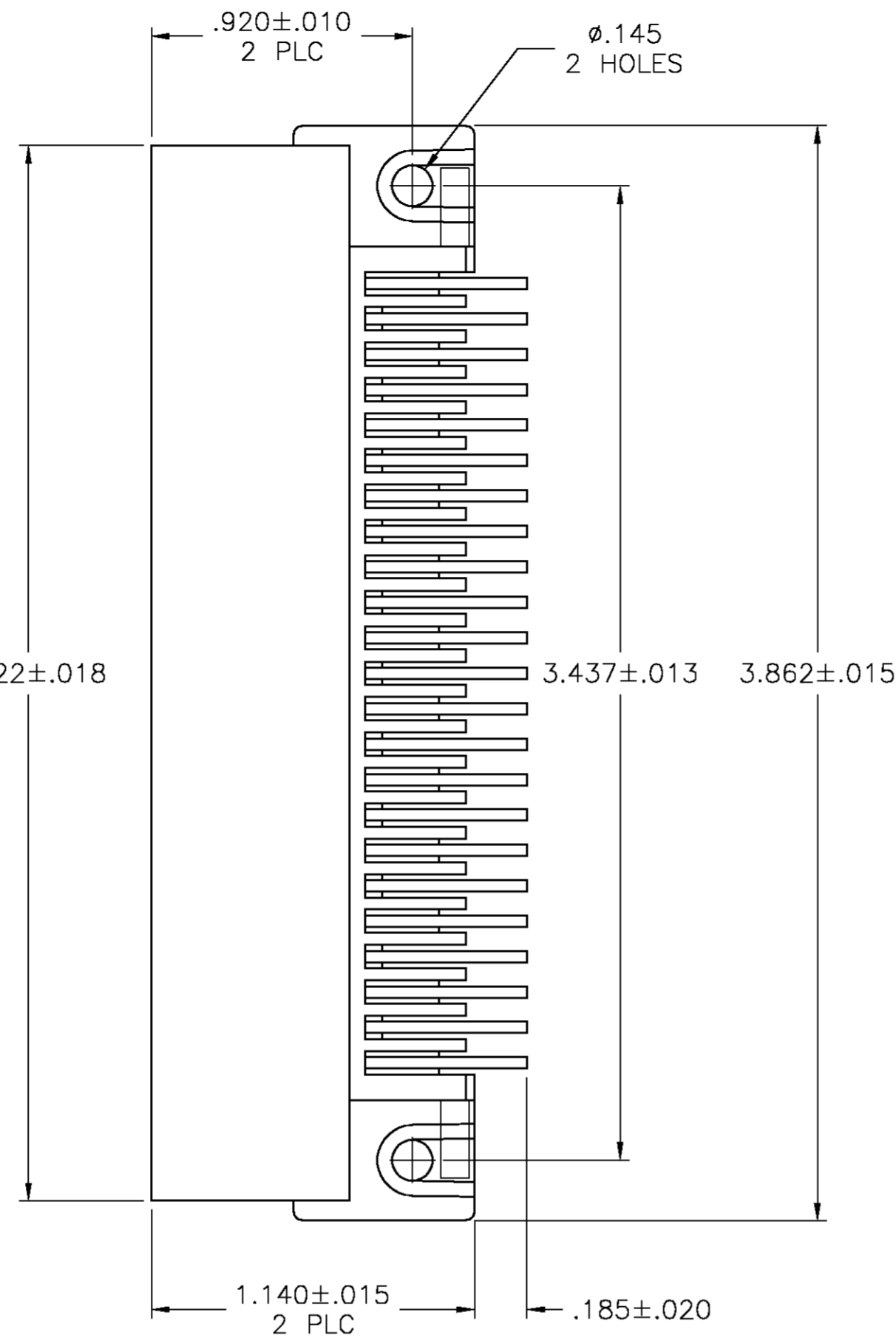
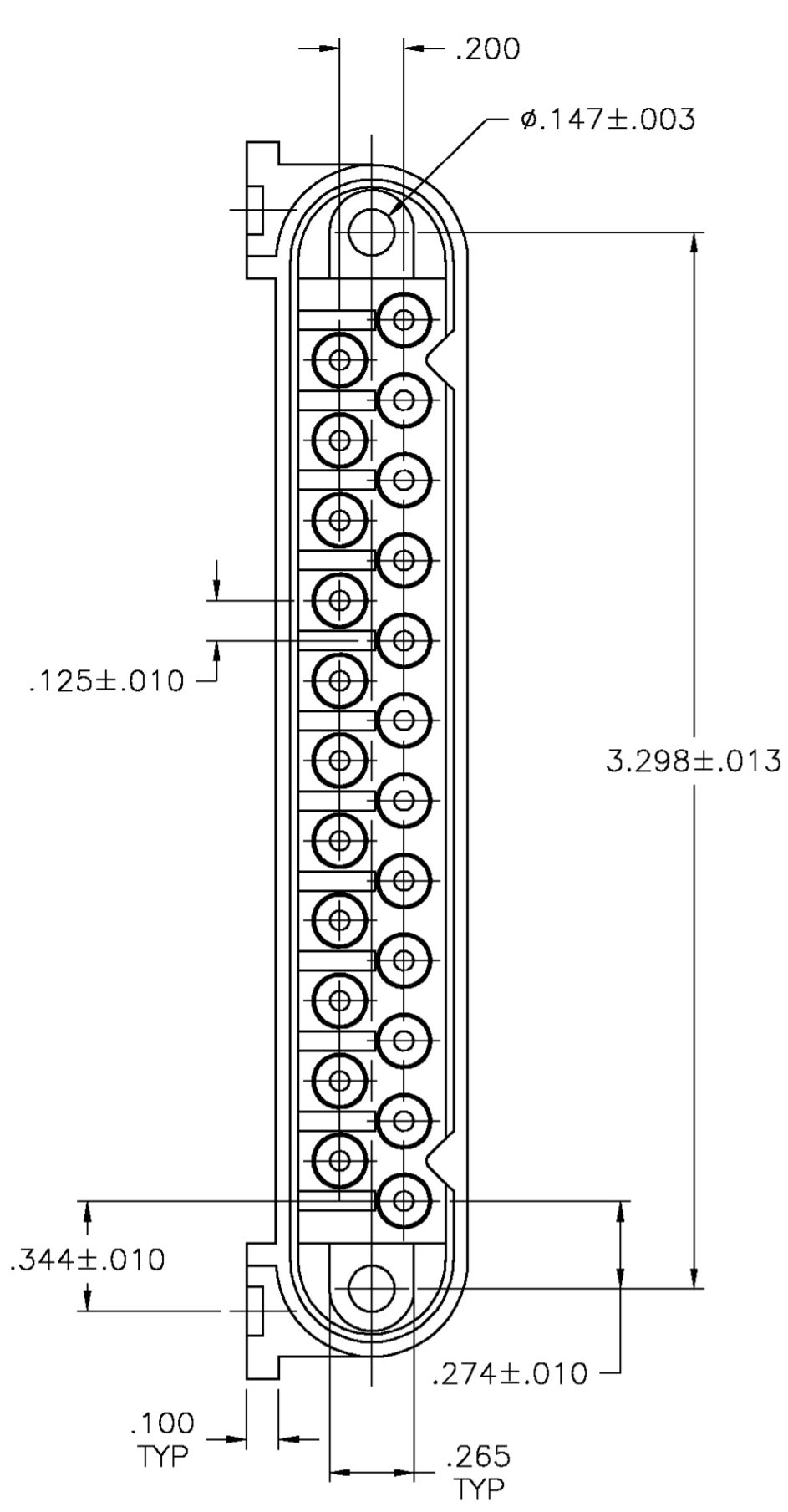


THIS DRAWING IS UNPUBLISHED. RELEASED FOR PUBLICATION  
 © COPYRIGHT BY TYCO ELECTRONICS CORPORATION. ALL RIGHTS RESERVED.

LOC		DIST		REVISIONS			
P	LTR	DESCRIPTION		DATE	DWN	APVD	
FT	0	B		REVISED PER 0C3B-0197-05	4/25/05	SS	GS



**NOTES:**

▲ .000030 MIN GOLD FOR A LENGTH OF .200 MIN FROM MATING END, .000150 TIN-LEAD FOR A LENGTH OF .085 MIN FROM OPPOSITE END, BOTH OVER .000050 MIN NICKEL ON ENTIRE CONTACT.

▲ .000030 MIN GOLD FOR A LENGTH OF .200 MIN FROM MATING END, .000150 TIN FOR A LENGTH OF .085 MIN FROM OPPOSITE END, BOTH OVER .000050 MIN NICKEL ON ENTIRE CONTACT.

▲	NONE	NONE	ALL POSITIONS	1546763-2
▲	NONE	NONE	ALL POSITIONS	1546763-1
FINISH	EMPTY CIRCUITS	GROUND CONTACTS	SIGNAL CONTACTS	PART NO.

THIS DRAWING IS A CONTROLLED DOCUMENT.

DWN	S SCHLEGEL	7/21/03
CHK	G STEINHAUER	7/21/03
APVD	G STEINHAUER	7/21/03

**tyco** Tyco Electronics Corporation  
 Harrisburg, Pa 17105-3608

NAME: PIN HEADER ASSEMBLY, 23 POSITION, VERTICAL, METRIMATE

SIZE	A2	CAGE CODE	00779	DRAWING NO	C=1546763	RESTRICTED TO	-	
CUSTOMER DRAWING	SCALE	2:1	SHEET	1	OF	1	REV	B

1546763