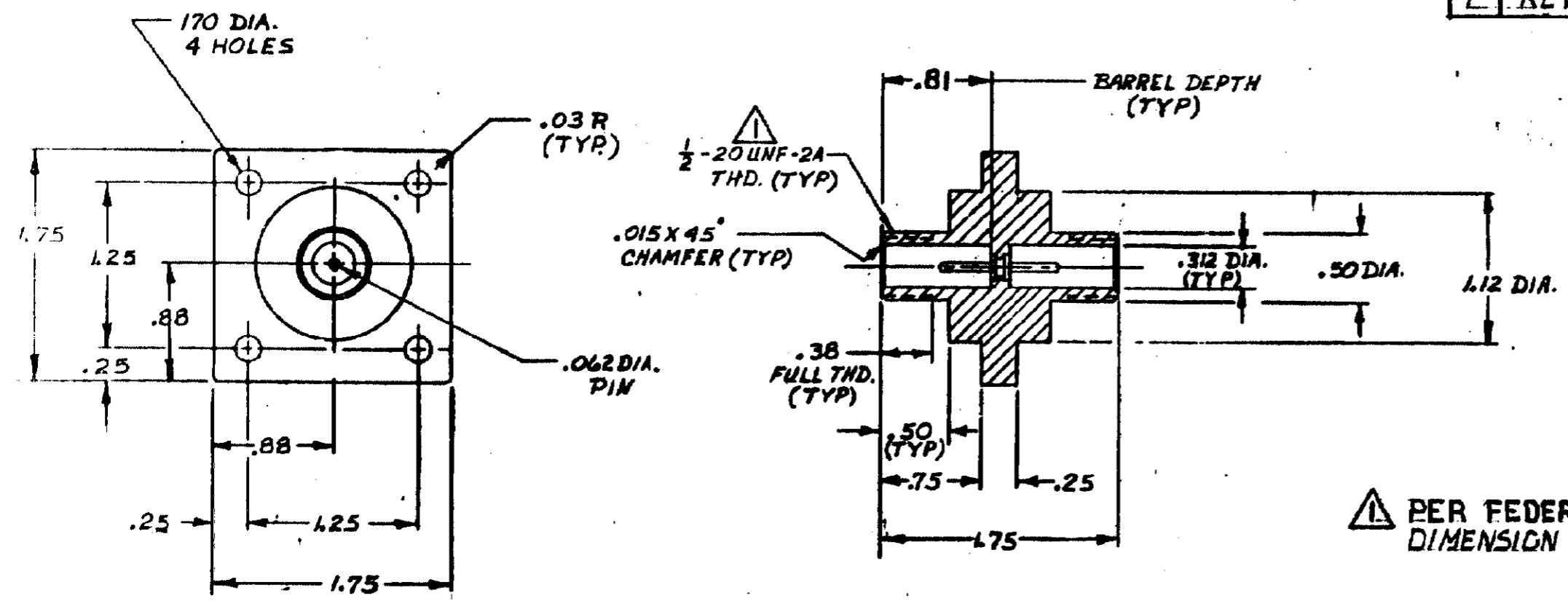


DESIGNED BY AMP INCORPORATED. ALL RIGHTS RESERVED. AMP PRODUCTS COVERED BY PATENTS AND/OR PATENTS PENDING.

THIS PRODUCT DESIGNED AND BUILT BY AMP INCORPORATED. NO LICENSE TO USE THAT DESIGN IN MANUFACTURE, OR TO USE ANY ISSUED OR PENDING PATENTS WHICH ARE INVOLVED, IS IMPLIED.

REVISIONS			
LTR	DESCRIPTION	DATE	APPROVED
B	REDRAWN; WAS G-10	10/20/72	M.H.
C	DELETED RAISED ENGRAVING	1-5-73	Karkh
D	UP-DATED	7/10/77	Y.M.F.
E	OBSOLETE -2 ECN 53622	11-12-84	R.S.
E	REV PER ECN 5-3960	4-15-87	R.S.



PER FEDERAL STANDARD H-28 3 WIRE METHOD DIMENSION OVER WIRES TO BE: .497-.510.

2. RECEPTACLE TO MATE WITH AMP LGH-1L LEAD ASSEMBLY. AVAILABLE SEPARATELY. WHEN MATING LEAD ASSEMBLY WITH RECEPTACLE, APPLY SILICONE GREASE PER 830900 INSTRUCTIONS.

OBSOLETE	830050-2	AS SHOWN, PIN GOLD PLATED
	830050-1	AS SHOWN, PIN TIN PLATED

QTY REQD	TY REQD	PART OR IDENTIFYING NO.	NOMENCLATURE OR DESCRIPTION
LIST OF MATERIALS OR PARTS LIST			

AMP INFO		UNLESS OTHERWISE SPECIFIED: DIMENSIONS ARE IN INCHES TOLERANCES .00 .01 .02 .0000 .0008 .000 .0008 .0010 .0015 .0020	DR. J.S. 4-7-65	<b>AMP</b> AMP INCORPORATED CAPITRON DIVISION ELIZABETHTOWN, PENNSYLVANIA
LOC L1	PRINT/DIST 37		CHK	
NEXT ASSY		MATERIAL GLASS EPOXY (MOLDED) BLACK	APPD J.W. GAW 4-8-65	SIZE B
APPLICATION			APPD	CODE IDENT NO. 8300
			DEGN APPD	NUMBER 830050
			OTHER APPD	SCALE 1/1 WT SHEET 1 OF 1

CUSTOMER DRAWING