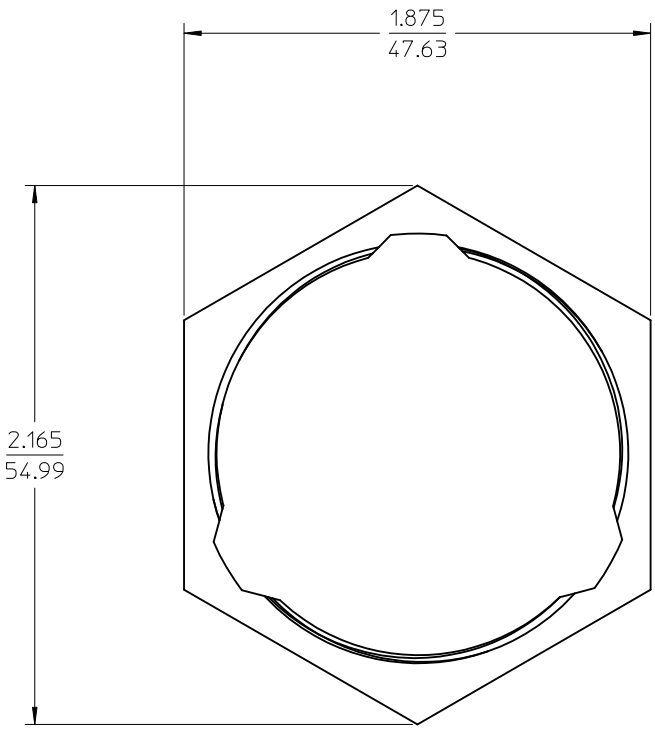
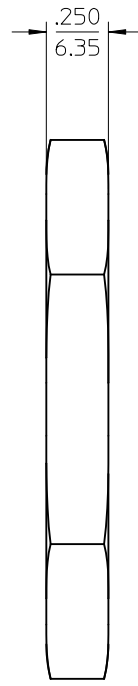


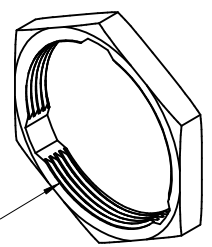
10 9 8 7 6 5 4 3 2 1



SCALE 2:1



SCALE 2:1



1.6875 - 18 UNEF-2B THREAD

ISOVIEW  
SCALE 1:1

NOTE(S):

1. MATERIAL: POLYESTER (PBT)  
COLOR: BLACK  
UL FLAMMABILITY RATING: UL94 V-0
2. USE WITH MOLEX XRC RECEPTACLE CONNECTORS  
SERIES 84506 AND 84511.
3. RECOMMENDED TORQUE: 65-75 IN-LB (7.3-8.5 N-M)
4. MATERIAL IS ROHS COMPLIANT.

ADD TORQUE EC NO: IPG2013-0642 DRW: WLEUNG 2012/10/30 CHK: DITITUS 2013/02/15 APPR: DITITUS 2013/02/19	DESCRIPTION B	QUALITY SYMBOLS	GENERAL TOLERANCES (UNLESS SPECIFIED)		DIMENSION STYLE IN/MM		SCALE 1:1	DESIGN UNITS INCH	THIRD ANGLE PROJECTION	
		▽=0	4 PLACES ± --- ± ---	DRAWN BY WLEUNG	DATE 2008/12/16	TITLE <b>PANEL HEX NUT, PIN OR SOCKET RECEPTACLE 24 SHELL</b> <b>molex</b>				
		▽=0	3 PLACES ± --- ± .015	CHECKED BY WLEUNG	DATE 2008/12/16					
		▽=0	2 PLACES ± 0.38 ± ---	APPROVED BY RDEROSS	DATE 2008/12/16	MATERIAL NO. 845060012	DOCUMENT NO. SD-84506-012	SHEET NO. 1 OF 1		
ANGULAR ± 2 ° DRAFT WHERE APPLICABLE MUST REMAIN WITHIN DIMENSIONS			THIS DRAWING CONTAINS INFORMATION THAT IS PROPRIETARY TO MOLEX INCORPORATED AND SHOULD NOT BE USED WITHOUT WRITTEN PERMISSION							

9 8 7 6 5 4 3 2 1