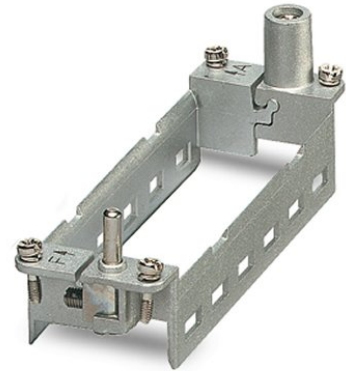


## HC-M-MHR-T6-N


Order No.: 1679278



<http://eshop.phoenixcontact.de/phoenix/treeViewClick.do?UID=1679278>

HEAVYCON hinged retaining frame, for HC-B 24 sleeve housing, for 6 modules, labeling with upper case letters (A, B, C, etc.)

### Commercial data

|                          |   |
|--------------------------|---|
| GTIN (EAN)               | <br>4 017918 162566 |
| sales group              | D041  |
| Pack                     | 2 pcs.  |
| Customs tariff           | 85369010  |
| Catalog page information | Page 464 (PC-2009)  |

### Product notes

WEEE/RoHS-compliant since:  
04/13/2006



<http://www.download.phoenixcontact.com>  
Please note that the data given here has been taken from the online catalog. For comprehensive information and data, please refer to the user documentation. The General Terms and Conditions of Use apply to Internet downloads.

### Technical data

#### Electrical characteristics

|                                 |                        |
|---------------------------------|------------------------|
| Note                            | Hinged retaining frame |
| Ambient temperature (operation) | -40 °C ... 125 °C      |

#### Mechanical characteristics

|                         |   |
|-------------------------|---|
| Conductor cross-section | 4 mm <sup>2</sup> ... 6 mm <sup>2</sup> (for PE conductor – power side) |
|-------------------------|---|

|                              |   |
|------------------------------|---|
|                              | 1 mm <sup>2</sup> ... 2.5 mm <sup>2</sup> (for PE conductor – control side) |
| Connection cross-section AWG | 12 ... 10 (for PE conductor – power side)                                   |
|                              | 18 ... 14 (for PE conductor – control side)                                 |
| Insertion/withdrawal cycles  | ≥ 500   |

**General characteristics**

|                        |  |
|------------------------|--|
| Number of module slots | 6  |
| Assembly instructions  | HC-MHR-PE16 ( 1636981) for PE connection extension to 16 mm <sup>2</sup> . |

**Material data**

|                          |                     |
|--------------------------|---------------------|
| Contact carrier material | Die-cast zinc alloy |
|--------------------------|---------------------|

**Certificates / Approvals**



Certification GOST

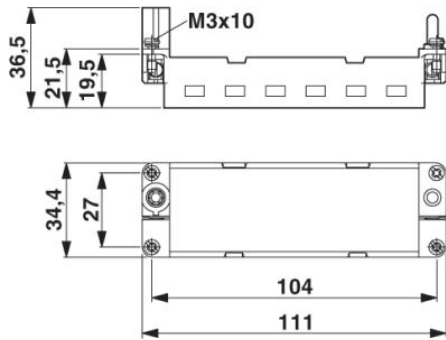
**Accessories**

| Item                | Designation   | Description  |
|---------------------|---------------|--|
| <b>General</b>      |               |  |
| 1585155             | HC-M-MHR-FIX  | Fixing wedge to fix the hinged retaining frame (20 wedges on the block)  |
| <b>Plug/Adapter</b> |               |  |
| 1636981             | HC-M-MHR-PE16 | Cable lug for HEAVYCON-MODULAR; PE connection extension to 16 mm <sup>2</sup> , for crimping with crimp pliers |

**Diagrams/Drawings**

Dimensioned drawing

---



**Address**

PHOENIX CONTACT Deutschland GmbH  
Flachmarktstr. 8  
32825 Blomberg, Germany  
Phone +49 5235 3 12000  
Fax +49 5235 3 41200  
<http://www.phoenixcontact.de>



© 2010 Phoenix Contact  
Technical modifications reserved;