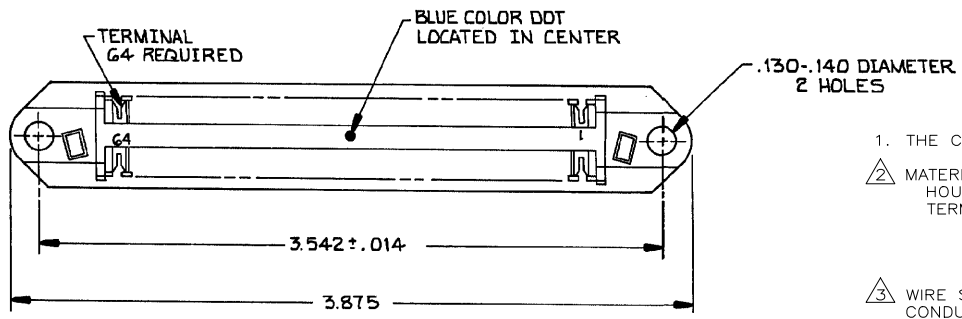
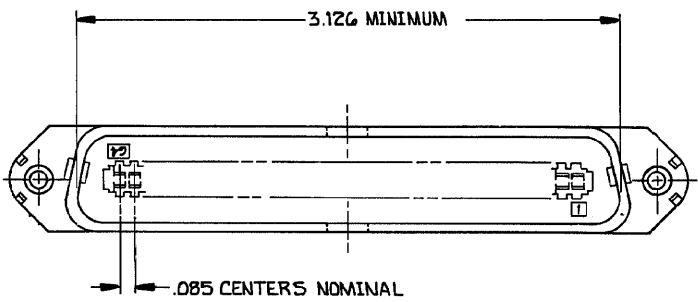
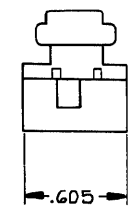
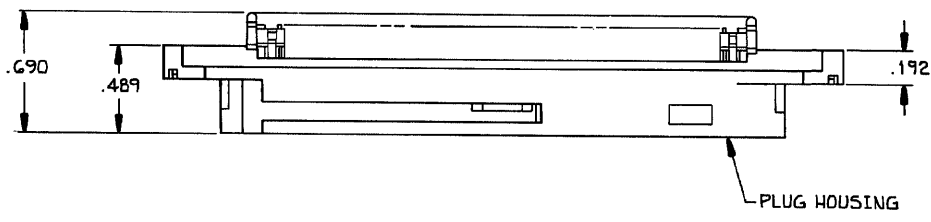


THIS DRAWING IS UNPUBLISHED. RELEASED FOR PUBLICATION
 © COPYRIGHT BY TYCO ELECTRONICS CORPORATION. ALL RIGHTS RESERVED.

LOC		DIST		REVISIONS			
P	LTR	DESCRIPTION	DATE	DWN	APVD		
GP	00	B	REVISED PER ECC-08-007327	27JAN2009	ZMR	WLM	



1. THE CONTACT SURFACES OF THE TERMINALS ARE COATED WITH LUBRICANT
- 2 MATERIAL:
 HOUSING - POLYPHENYLENE OXIDE
 TERMINALS - HIGH STRENGTH COPPER ALLOY PLATED WITH EITHER .000030 MIN GOLD OR GOLD FLASH OVER PALLADIUM NICKEL .000030 MIN TOTAL, ON CONTACT MATING SURFACE. .000050 MIN NICKEL UNDERPLATE OVER ENTIRE TERMINAL.
- 3 WIRE SIZE: 24-26 AWG SOLID OR 24 AWG 7 STRANDS OF COPPER CONDUCTORS. MAXIMUM INSULATION DIAMETER OF .045 IS ACCEPTABLE FOR MOST APPLICATIONS.
4. ALL DIMENSIONS SHOWN ARE MAXIMUM UNLESS OTHERWISE SPECIFIED.



BLACK HOUSING COLOR	B/3	555425-1
	SLOT SIZE	PART NO

THIS DRAWING IS A CONTROLLED DOCUMENT.		DWN D. MARTIN 10-13-87	Tyco Electronics Corporation Harrisburg, PA 17105-3608	
DIMENSIONS: INCHES		CHK B. FOX 10-14-87	NAME	
TOLERANCES UNLESS OTHERWISE SPECIFIED:		APVD J. T. 10-14-87	PRODUCT SPEC	
0 PLC	± .005	APPLICATION SPEC		
1 PLC	± .005	SIZE		
2 PLC	± .005	CAGE CODE		
3 PLC	± .005	DRAWING NO		
4 PLC	± .005	RESTRICTED TO		
ANGLES	± .005	A2 00779 ©=555425		
MATERIAL		WEIGHT		
FINISH		CUSTOMER DRAWING		
		SCALE		NTS SHEET 1 OF 1 REV B

555425