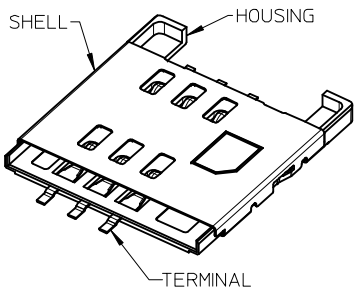
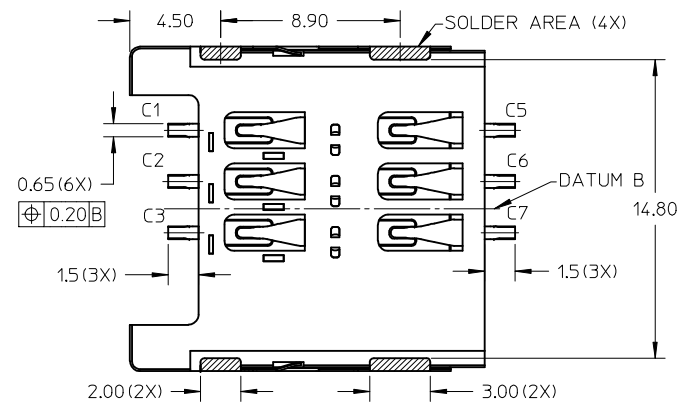
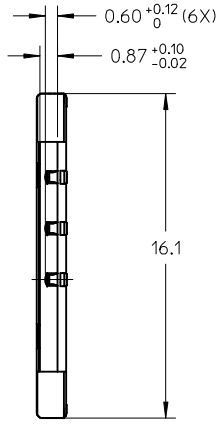
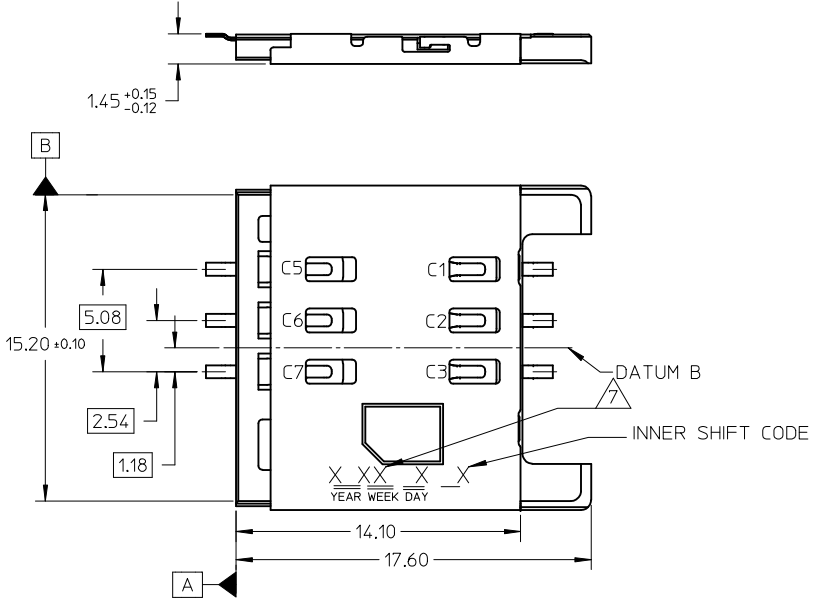
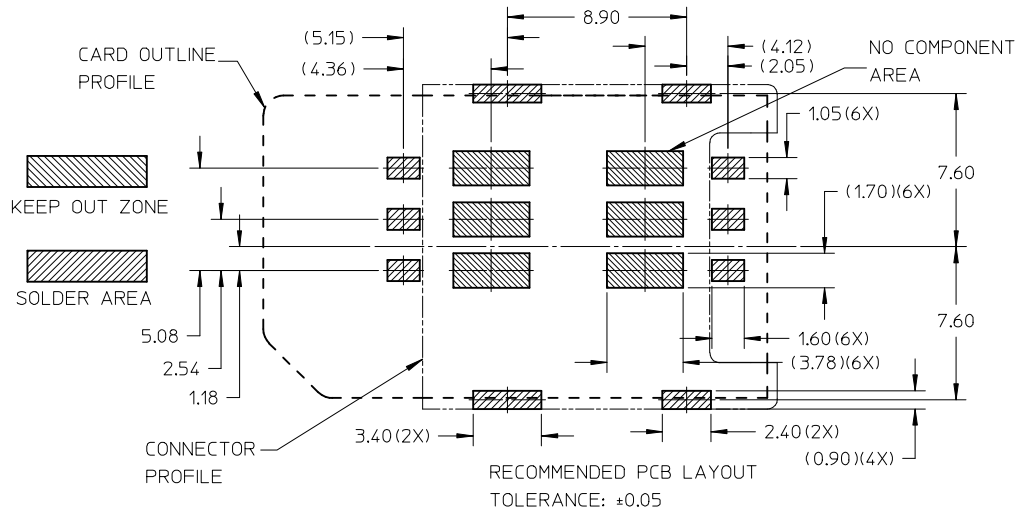
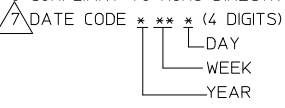


10 9 8 7 6 5 4 3 2 1



P/N	GOLD PLATING ON CONTACT AREA
1050480011	0.50um (20u") MIN
1050480001	0.375um (15u") MIN

NOTE:
 1 MATERIAL
 HOUSING : LIQUID CRYSTALLINE POLYMER (LCP), GLASS FILLED UL94V-0, COLOR: BLACK
 TERMINAL : PHOSPHOR BRONZE
 SHELL : STAINLESS STEEL
 2 FINISHES
 TERMINAL : 0.375um (15u") MIN GOLD ON CONTACT AREA
 0.0762 - 0.127um (3 - 5u") GOLD FLASH ON SOLDER TAILS
 1.27um (50u") MIN NICKEL UNDERPLATE OVER ALL
 SHELL : 0.0762um (3u") MIN GOLD FLASH OVER 1.27um (50u") MIN NICKEL UNDERPLATE ON SOLDER AREAS
 3 PRODUCT SPECIFICATION: PS-105048-001
 4 PACKAGING SPECIFICATION: PK-105048-001
 5 ALL SOLDER TAILS COPLANARITY: 0.08mm MAX
 6 COMPLIANT TO ROHS DIRECTIVE 2002/95/EC & ELV DIRECTIVE 2000/53/EC
 7 DATE CODE *** (4 DIGITS)



REV	DESCRIPTION	QUALITY SYMBOLS	GENERAL TOLERANCES (UNLESS SPECIFIED)		DIMENSION STYLE		SCALE	DESIGN UNITS	THIRD ANGLE PROJECTION	
			mm	INCH	MM ONLY	NTS	METRIC			
A2	ADD P/N: 1050480001 EC NO: S2012-0681 DRWN: JZENG CHKD: JTAN02 APPR: KHL IM	$F_A=0$ $F_C=0$ $F_P=0$	4 PLACES	± ---	± ---	JZENG	DATE	TITLE	SIM CONNECTOR 6PIN WITH GUIDE RAIL 1.45MM HEIGHT	
			3 PLACES	± ---	± ---	CHECKED BY	DATE		MOLEX INCORPORATED	
			2 PLACES	± 0.15	± ---	JTAN02	2011/03/07		DOCUMENT NO. SD-105048-011	
			1 PLACE	± 0.2	± ---	APPROVED BY	DATE		SHEET NO. 1 OF 1	
			ANGULAR ± 3 °			KHL IM	2011/03/07		THIS DRAWING CONTAINS INFORMATION THAT IS PROPRIETARY TO MOLEX INCORPORATED AND SHOULD NOT BE USED WITHOUT WRITTEN PERMISSION	
			DRAFT WHERE APPLICABLE MUST REMAIN WITHIN DIMENSIONS			MATERIAL NO.			SEE TABLE	

9 8 7 6 5 4 3 2 1