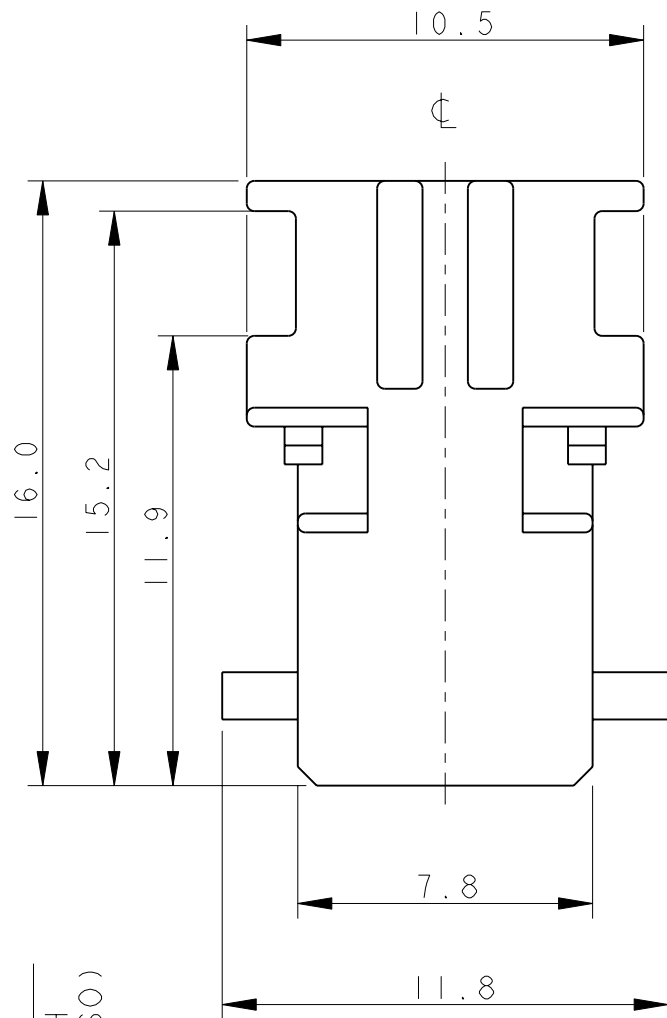
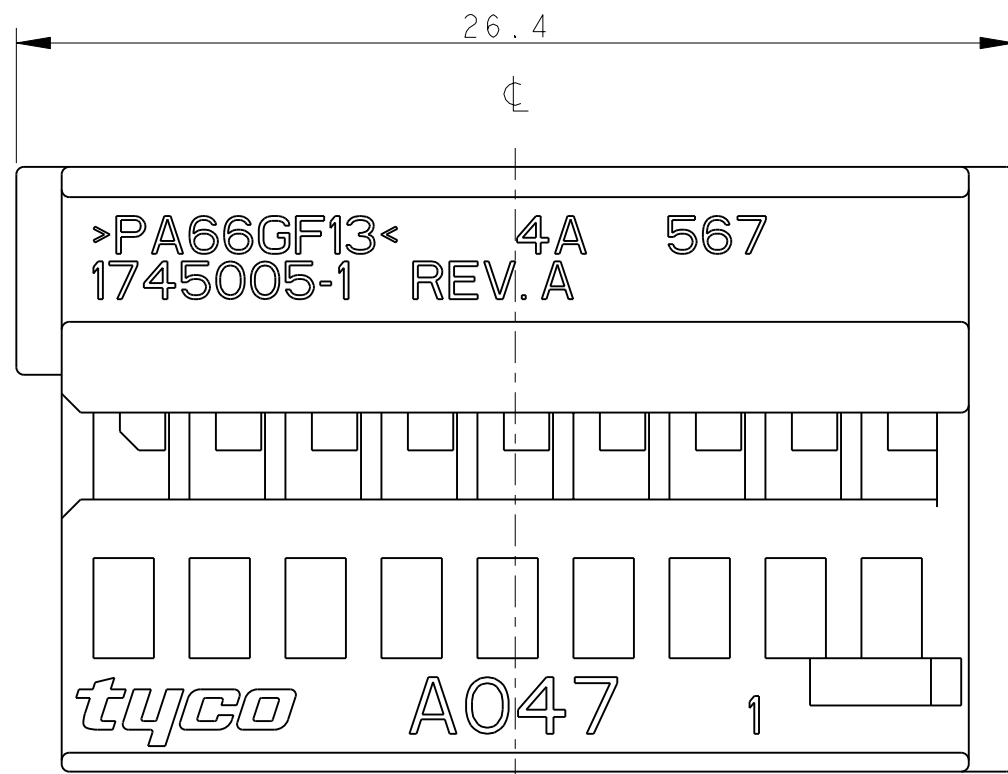


THIS DRAWING IS UNPUBLISHED.
QUESTO DISEGNO NON DEVE ESSERE DIVULGATO O RIPRODOTTO
© COPYRIGHT 2003 Tyco Electronics AMP GmbH

RELEASED FOR PUBLICATION
E' CONSENTITA LA DIVULGAZIONE
2003
ALL RIGHTS RESERVED.
TUTTI I DIRITTI SONO RISERVATI

LOC 1
DIST -

| REVISIONS | | DESCRIPTION | DATE | DWN | APVD |
|-----------|---------|---|-----------|------|------|
| REVISIONI | | DESCRIZIONE | DATA | DIS. | APP. |
| P | LTR REV | | | | |
| | 0 | EMISSIONE PRELIMINARE (PRELIMINARY ISSUE) | 07MAR2003 | M.S. | O.C. |
| | 1 | ERA (WAS) P/N 03-51039-3 | 04NOV2003 | M.S. | O.C. |
| | A | PRIMA EMISSIONE (FIRST ISSUE) ET00-0043-04 | 11JUN2004 | M.P. | O.C. |
| | A1 | RILASCIATO IN PRODUZIONE (RELEASED FOR PRODUCTION) ET00-0239-04 | 04FEB2005 | M.P. | O.C. |
| | A2 | ECR-11-017843 | 05SEP2011 | M.P. | O.C. |

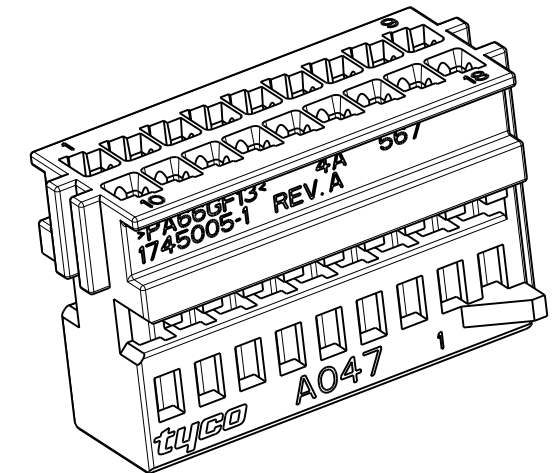


NOTES:
(NOTE)

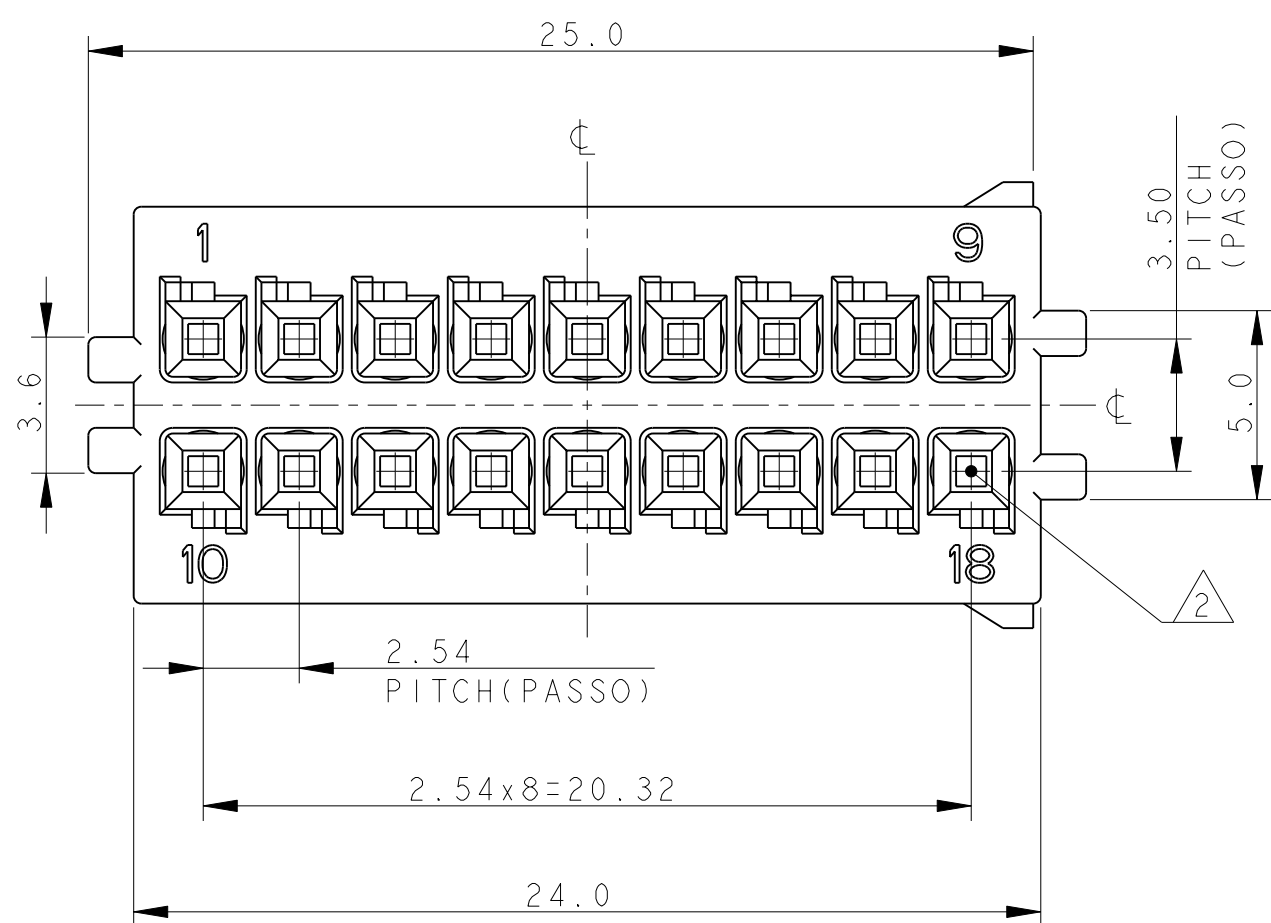
1) HOUSING MATERIAL: PA66 GF COLOUR BLACK
(MATERIALE BLOCCHETTO: PA66 CARICATO VETRO COLORE NERO)

2) CAVITIES SUITABLE FOR REC. MQS CONTACT
P/N 928999-1
(CAVITA' ADATTE PER CONTATTO FEMMINA MQS P/N 928999-1)

3) HOUSING SUITABLE FOR FRAME 18 POSITIONS
P/N 1745003-1
(PORTAFEMMINE ADATTO PER CORAZZA 18 POSIZIONI P/N 1745003-1)

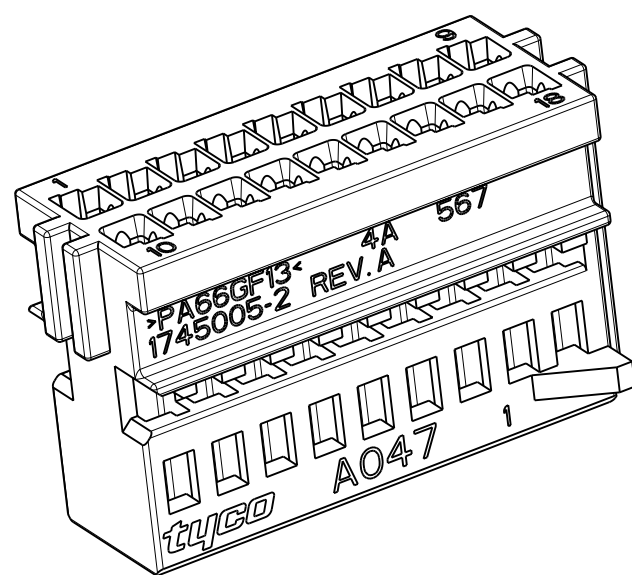
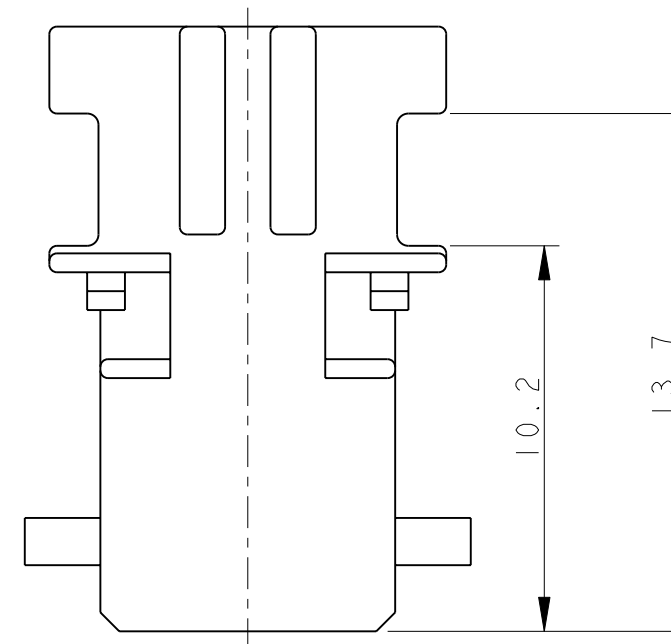
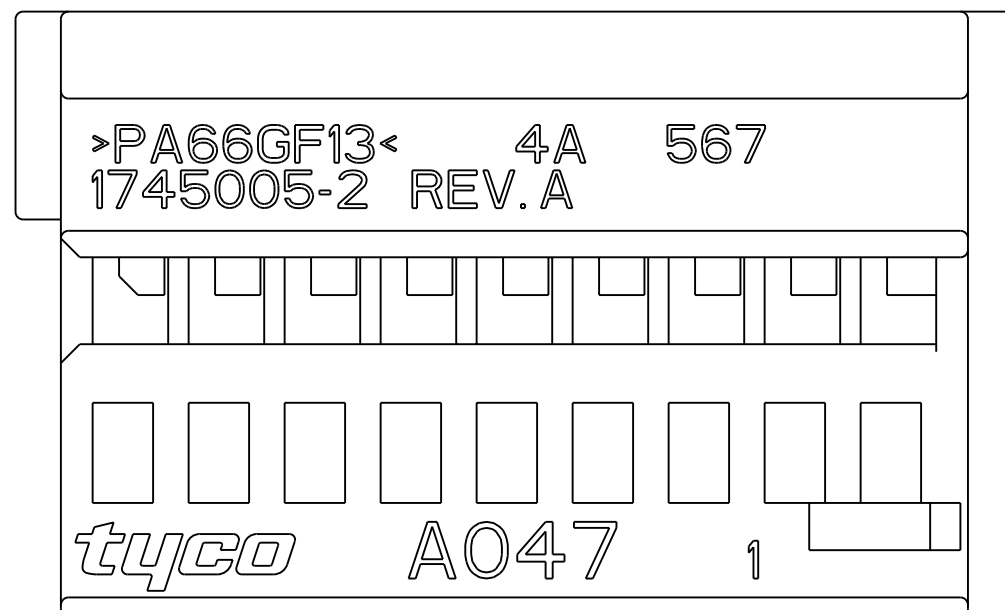


P/N 1745005-1 BLACK AS SHOWN
(NERO COME MOSTRATO)



| | | | |
|---|-----------------|--|---|
| THIS DRAWING IS A CONTROLLED DOCUMENT. QUESTO DISEGNO E' UN DOCUMENTO DI PROPRIETA' E RESPONSABILITA' DELL' AMP INCORPORATED. E' SOGGETTO A VARIAZIONI. PER OTTENERE L'ULTIMA REVISIONE DEL DISEGNO CONTATTARE L'UFFICIO TECNICO RESPONSABILE. | | DWN/DIS. 07MAR2003 M. SARDI | |
| DIMENSIONS: DIMENSIONI: mm | | CHK/CONT. 07MAR2003 O. CANUTO | |
| TOLERANCES UNLESS OTHERWISE SPECIFIED: TOLLERANZE: SE NON DIVERSAMENTE SPECIFICATO | | APVD/APP. 07MAR2003 A. GENTA | |
| 0 PLC/DEC ±0.5 1 PLC/DEC ±0.3 2 PLC/DEC ±0.2 3 PLC/DEC ± 4 PLC/DEC ± ANGLES/ANGOLI ±1° | | PRODUCT SPEC SPEC. DI PRODOTTO 108-20182 | |
| MATERIAL MATERIALE | FINISH FINITURA | APPLICATION SPEC SPEC. DI APPLICAZIONE 411-20056 | NAME NUME 18 POS. MQS RECEPTACLE HOUSING |
| | | WEIGHT PESO - | PITCH 2.54mm (PORTAFEMMINE MQS 18 VIE PASSO 2.54mm) |
| | | CUSTOMER DRAWING | SIZE A3 CAGE CODE 00779 |
| | | | DRAWING NO. NUMERO 1745005 |
| | | | RESTRICTED TO - |
| | | | SCALE 5:1 SHEET FOGLIO 1 OF DI 2 REV A2 |

| LOC | DIST | REVISIONS | | | | | |
|-----|------|-----------|-----|-------------|------|-----|------|
| | | P | LTR | DESCRIPTION | DATE | DWN | APVD |
| 1 | - | - | - | SEE SHEET 1 | - | - | - |
| | | | | | | | |
| | | | | | | | |





3) HOUSING SUITABLE FOR FRAME 18 POSITIONS
P/N 1745003-2
(PORAFEMMINE ADATTO PER CORAZZA 18
POSIZIONI P/N 1745003-2)

P/N 1745005-2 COLOUR GRAY AS SHOWN
(COLORE GRIGIO COME MOSTRATO)

SCALE 3:1

FOR MISSING DIMENSIONS AND NOTES SEE P/N 1745005-1 (SHEET 1/2)
(PER LE DIMENSIONI E NOTE MANCANTI VEDI P/N 1745005-1 (FOGLIO 1/2))

| | | | | |
|---|--|-------------------------------|---|--------------|
| THIS DRAWING IS A CONTROLLED DOCUMENT. | | DWN M. SARDI 07MAR2003 |  TE Connectivity | |
| DIMENSIONS: mm | | CHK O. CANUTO 07MAR2003 | | |
| TOLERANCES UNLESS OTHERWISE SPECIFIED: | | APVD A. GENTA 07MAR2003 | NAME 18 POS. MQS RECEPTACLE HOUSING PITCH 2.54mm (PORTAFEMMINE MQS 18 VIE PASSO 2.54mm) | |
| 0 PLC ±0.5 1 PLC ±0.3 2 PLC ±0.2 3 PLC ± 4 PLC ± ANGLES ±° | | PRODUCT SPEC 108-20182 | SIZE A300779 | |
| MATERIAL | | APPLICATION SPEC 411-20056 | DRAWING NO C=1745005 | |
| FINISH | | WEIGHT - | RESTRICTED TO - | |
|  | | CUSTOMER DRAWING | | SCALE 5:1 |
| | | | | SHEET 2 OF 2 |
| | | | | REV A2 |