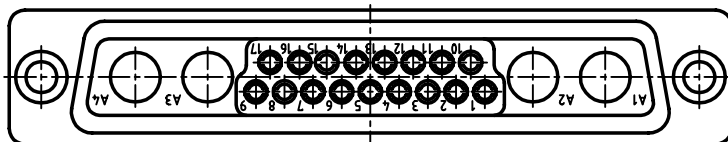
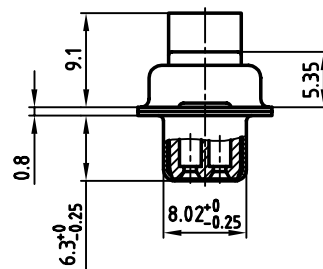
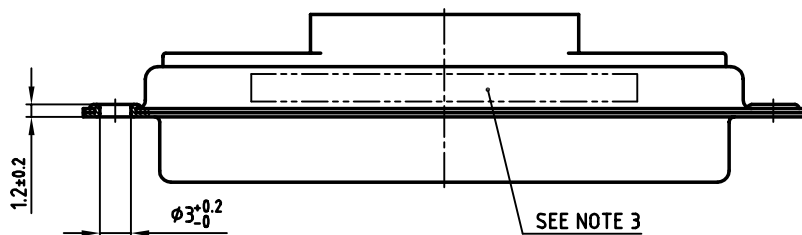
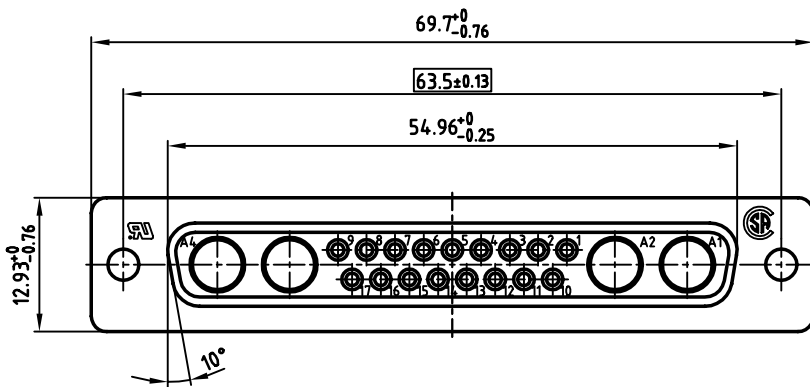


used for: D-SUB COMBINATION CRIMP



**NOTES:**

1. METALSHELLS: STEEL: TIN PLATED
2. INSULATORS: PBTP GF UL 94 V-0; BLACK
3. CONNECTOR IS PART MARKED: PART NO: CONEC Y/WW
4. [ ] = CRITICAL DIMENSION: SPC

Directive 2002/95/EC  
"RoHS"  
Compliant

THIS DRAWING MAY NOT BE COPIED OR REPRODUCED IN ANY WAY, AND MAY NOT BE PASSED ON TO A THIRD PARTY, WITHOUT WRITTEN PERMISSION. OWNERSHIP AND COPYRIGHT OF CONEC GmbH DO NOT ALTER CAD DRAWING BY HAND

rev.	description	date	name

tolerance			scale: 2:1
			material: SEE NOTES
1999	date	name	title: <b>D-SUB COMBINATION FEMALE</b> CRIMP STYLE 21WA4S
drawn	06.05.	Barcinski	
appd.	06.05.	Mickenbecker	
norm			
d-old			
			dwg no: AutoCAD/REL.14 DIN-A
			321WA4SXX99A10X
			3 sh:1/1

title: <b>D-SUB COMBINATION FEMALE</b> CRIMP STYLE 21WA4S	
dwg no: AutoCAD/REL.14	DIN-A
321WA4SXX99A10X	
3 sh:1/1	